

---

NATIONAL CENTER FOR EDUCATION STATISTICS

---

**E.D. Tabs**

**April 2002**

---

**Public School Student, Staff, and  
Graduate Counts by State:  
School Year 2000–01**

Beth Aronstamm Young  
National Center for Education Statistics

---

U.S. Department of Education  
Office of Educational Research and Improvement

NCES 2002–348

U.S. Department of Education  
Rod Paige  
*Secretary*

Office of Educational Research and Improvement  
Grover J. Whitehurst  
*Assistant Secretary*

National Center for Education Statistics  
Gary W. Phillips  
*Deputy Commissioner*

The National Center for Education Statistics (NCES) is the primary federal entity for collecting, analyzing, and reporting data related to education in the United States and other nations. It fulfills a congressional mandate to collect, collate, analyze, and report full and complete statistics on the condition of education in the United States; conduct and publish reports and specialized analyses of the meaning and significance of such statistics; assist state and local education agencies in improving their statistical systems; and review and report on education activities in foreign countries.

NCES activities are designed to address high priority education data needs; provide consistent, reliable, complete, and accurate indicators of education status and trends; and report timely, useful, and high quality data to the U.S. Department of Education, the Congress, the states, other education policymakers, practitioners, data users, and the general public.

We strive to make our products available in a variety of formats and in language that is appropriate to a variety of audiences. You, as our customer, are the best judge of our success in communicating information effectively. If you have any comments or suggestions about this or any other NCES product or report, we would like to hear from you. Please direct your comments to:

National Center for Education Statistics  
Office of Educational Research and Improvement  
U.S. Department of Education  
1990 K Street, N.W.  
Washington, DC 20006

April 2002

The NCES World Wide Web Home Page address is <http://nces.ed.gov>  
The NCES World Wide Web Electronic Catalog is <http://nces.ed.gov/pubsearch>

**Suggested Citation**

U.S. Department of Education, National Center for Education Statistics, *Public School Student, Staff, and Graduate Counts by State: School Year 2000-01*, NCES 2002-348, by Beth Aronstamm Young. Washington, DC: 2002.

**Content Contact:**

Beth Aronstamm Young  
(202) 502-7480

Copies of this publication are available on the NCES Web Site as a PDF and may be either downloaded or printed directly. The URL for the publication is:  
<http://nces.ed.gov/pubsearch/pubsinfo.asp?pubid=2002348>

## Acknowledgments

Thanks are due to Dell Gray from the Census Bureau for the creation and production of the tables. Special thanks as always go to Lee Hoffman and Leslie Scott who provided data and editorial support for this report. Thanks also to Susan Baldrige from Pinkerton Computer Consultants, who did the figures and report formatting.

The author gratefully acknowledges the comments and suggestions of the reviewers. Reviewers from outside the Department of Education include Ron Leclerc, New Hampshire Department of Education, Charlene Swanson, New York Department of Education, Rolf Blank, Council of Chief State School Officers, and Sally Dillow of Education Statistical Services Institute. Reviewers from the Department of Education include Judith Anderson and Alan Ginsburg, Office of the Undersecretary. Thanks to Steve Broughman, Charlene Hoffman, Frank Johnson, Mariann Lemke, and Bruce Taylor from NCES, for their reviews.

Copies of this report and other Common Core of Data (CCD) products are on the CCD Web Site at <http://nces.ed.gov/ccd>



## Introduction

This annual report presents findings from the Common Core of Data (CCD) “State Nonfiscal Survey of Public Elementary/Secondary Education, School Year 2000–01.” Data for this annual NCES survey are collected directly from state education agencies and include the total number of students, teachers, and graduates.

Data from the 2000–01 CCD survey can answer many questions about public elementary and secondary education including the following:

- How many students were enrolled in public elementary and secondary schools?
- How many teachers worked in public elementary and secondary schools?
- What kinds of staff worked in public elementary and secondary schools?
- What was the racial/ethnic background of students enrolled in public schools?
- How many students graduated from high school during the previous school year (1999–2000)?
- How many students are educated in Department of Defense, Bureau of Indian Affairs, and outlying area schools? (Data on the Department of Defense, Bureau of Indian Affairs, and outlying area schools are discussed separately. These data are not included in national totals.)

## Selected Findings

### **How many students were enrolled in public elementary and secondary schools?**

In the 2000–01 school year, there were 47.2 million students enrolled in public elementary and secondary schools in the 50 states and the District of Columbia (table 1).<sup>1</sup> Of these students, 26.2 million (55.5 percent) were in prekindergarten through grade 6, an additional 20.5 million (43.4 percent) were in grades 7 through 12, and the remaining 0.6 million (1.2 percent) were ungraded students<sup>2</sup> (figure 1). Not including prekindergarten or ungraded classes, grade 9 had the most students while grade 12 had the fewest.

California had the most public elementary and secondary school students (6.1 million), followed by Texas (4.1 million) and New York (2.9 million). Thirteen states had over 1 million public elementary and secondary students in the 2000–01 school year. The District of Columbia (68,925), Wyoming (89,940), and Vermont (102,049) had the fewest students. Nine states and the District of Columbia had fewer than 200,000 public elementary and secondary students in the 2000–2001 school year.

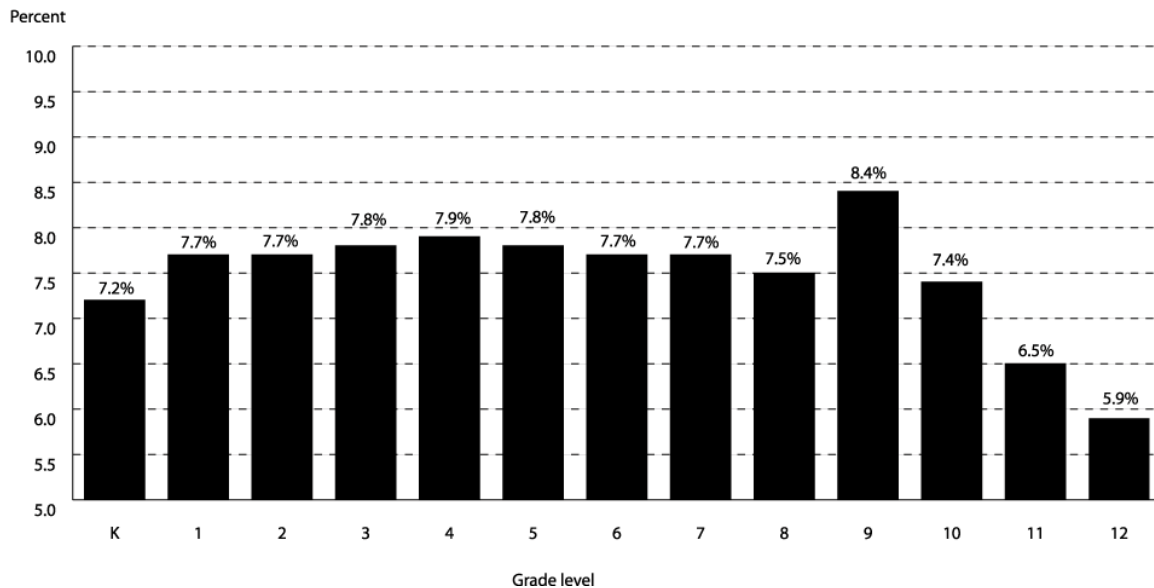
The 47.2 million students enrolled in the 2000–01 school year represents a 14.6 percent increase in the number of students being served in the public elementary and secondary school system since the 1990–91 school year (table 10). Between the 1990–91 and 2000–01 school years, Nevada had the largest percentage increase (69.2 percent) in the number of students. Seven states and the District of Columbia had a decrease in the number of students between these years (the District of Columbia, Louisiana, Maine, Mississippi, North Dakota, South Dakota, West Virginia, and Wyoming). The District of Columbia had the largest percentage decrease in students with a 14.6 percent drop.

---

<sup>1</sup> Grade level counts do not sum to 47.2 million, because of rounding.

<sup>2</sup> Ungraded students are students assigned to class or program that does not have standard grade designations.

**Figure 1.—Percentage of public elementary and secondary students, by grades kindergarten through 12: School year 2000–01**



SOURCE: U.S. Department of Education, National Center for Education Statistics, Common Core of Data (CCD), "State Nonfiscal Survey of Public Elementary/Secondary Education," 2000–01.

### **How many teachers worked in public elementary and secondary schools?**

About 3.0 million full-time-equivalent teachers provided instruction in public elementary and secondary schools in the 2000–01 school year (table 2). Among this group, 56.7 percent (1.7 million) were elementary school teachers (including prekindergarten and kindergarten teachers), 35.8 percent (1.2 million) were secondary school teachers, and 7.5 percent (222,921) were teachers who taught ungraded classes or were not assigned a specific grade. Only seven states had over 100,000 teachers. Two of these, California and Texas, had over one-quarter of a million teachers each.

While there was a 14.6 percent increase in students between the 1990–91 and 2000–01 school years, there was a 23.1 percent increase in the number of teachers (table 10). As with the number of students, Nevada also had the largest percentage increase in the number of teachers (76.4 percent). Only the District of Columbia (16.8) and West Virginia (2.5) had a decrease in the number of teachers between these two school years.

The ratio of total students to total teachers for the nation was 16.0 students per teacher in the 2000–01 school year (table 2). Student/teacher ratios ranged from a low of 12.1 students per teacher in Vermont to a high of 21.9 in Utah. The median student/teacher ratio was 15.1; that is, half the states had a student/teacher ratio greater than 15.1, and half had a lower ratio. Student/teacher ratios should not be interpreted as average class size, since not all teachers are assigned to a class (e.g., music and art teachers in elementary schools).

### **What kinds of staff worked in public elementary and secondary schools?**

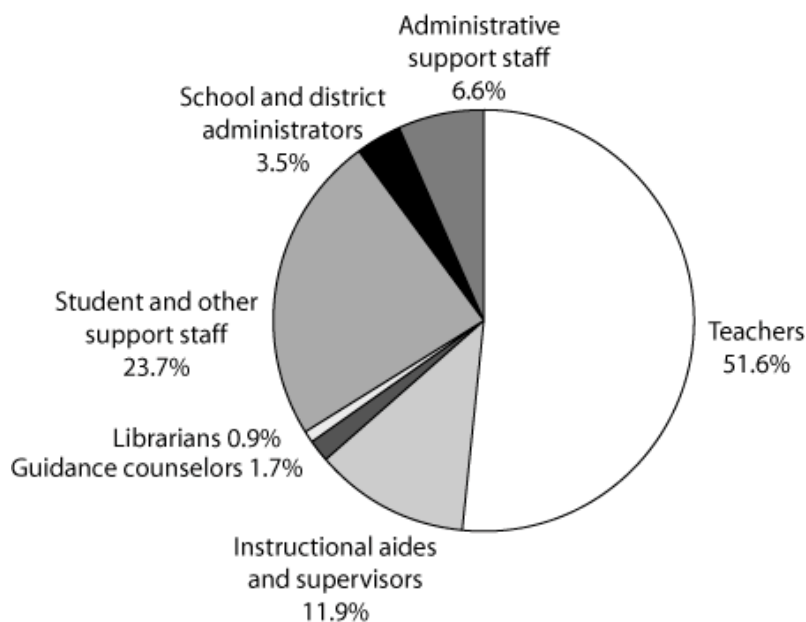
In addition to the teachers enumerated previously, an additional 2,773,831 staff were employed in public schools. In the 2000–01 school year, 642,294 instructional aides directly assisted teachers in providing instruction and an additional 40,664 instructional coordinators and supervisors

assisted teachers (e.g. curriculum development and in-service training) (table 3). Teachers made up 51.6 percent of all staff in the 2000–01 school year and instructional aides and coordinators made up an additional 11.9 percent of staff (figure 2). The percentage of all staff who were teachers ranged from 60.0 percent in Rhode Island to 44.1 percent in Kentucky. Vermont had a relatively low percentage of teachers per staff (47.3), the highest percentage of instructional aides (22.1 percent), and the lowest pupil-teacher ratio (table 2).

Another 26.4 percent<sup>3</sup> of all staff (librarians, counselors, and other support staff) provided support services to schools and students. Staff providing support included 97,369 guidance counselors and 54,281 librarians. This translates to 485 students for every guidance counselor reported on average, and 870 students for each librarian. An additional 1.4 million staff members provided other support services for students. These services included food, health, library assistance, maintenance, transportation, security, and other services in the nation’s public schools.

There were 141,407 school administrators (mostly principals and assistant principals), 58,891 school district administrators, and 380,655 school and district administrative support staff. Administrators and administrative support staff made up 10.1 percent of all education staff. On average, there were 15 teachers and 13 other staff for each district and school administrator.

**Figure 2.—Percentage of public elementary and secondary staff, by type: School year 2000–01**



SOURCE: U.S. Department of Education, National Center for Education Statistics, Common Core of Data (CCD), "State Nonfiscal Survey of Public Elementary/Secondary Education," 2000–01.

**What was the racial/ethnic background of students enrolled in public schools?**

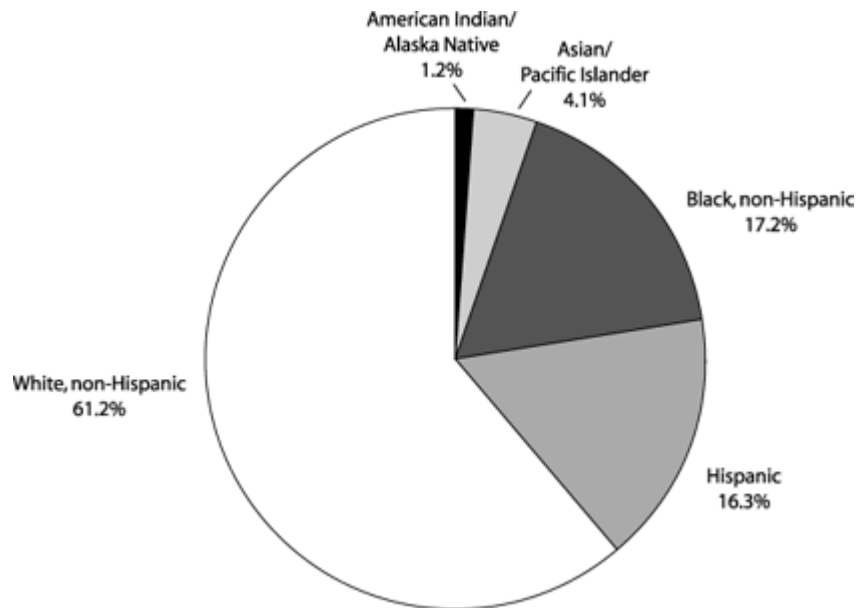
In the 2000–01 school year, racial/ethnic data were reported for 47.0 of the 47.2 million students enrolled in public elementary and secondary schools in the 50 states and the District of Columbia

<sup>3</sup> Percentages for categories shown in Figure 2 may not sum to total, because of rounding.

(table 4). White, non-Hispanic students made up the majority of students (61.2 percent<sup>4</sup>) followed by Black, non-Hispanic and Hispanic students (17.2 and 16.3 percent, respectively) (figure 3 and table 5). Asian/Pacific Islander students made up 4.1 percent of the public school population and American Indian/Alaska Native students made up 1.2 percent.

In six states (California, Hawaii, Louisiana, Mississippi, New Mexico, and Texas) and the District of Columbia, 50 percent or more of students were non-white. Black, non-Hispanic students made up more than 50 percent of all students in the District of Columbia and Mississippi. New Mexico reported 50.2 percent of its students as Hispanic, and Hawaii reported 72.3 percent of its student body as Asian/Pacific Islander. On the other hand, five states (Iowa, Maine, New Hampshire, Vermont, and West Virginia) reported that over 90 percent of their students were White, non-Hispanic.

**Figure 3.—Percentage of public elementary and secondary students, by race/ethnicity: School year 2000–01**



SOURCE: U.S. Department of Education, National Center for Education Statistics, Common Core of Data (CDD), "State Nonfiscal Survey of Public Elementary/Secondary Education," 2000–01.

**How many students graduated from high school during the 1999–2000 school year?**

Some 2.5 million students received a high school diploma in the 50 states and the District of Columbia during the 1999–2000 school year and subsequent summer (table 6). Another 41,638 received other high school completion credentials (e.g., certificate of attendance). These high school completers only made up 1.6 percent of all high school completers (diplomas and other high school completers, not including high school equivalencies). In addition, there were students who earned a high school equivalency certificate; however, a national total cannot be computed because of missing data from a number of states. Note that some states grant only diplomas and high school equivalency certificates and do not recognize any other types of high school completion and states are not necessarily comparable.

<sup>4</sup> Based on the 47.0 million students with reported racial/ethnic data.



**How many students are educated in Department of Defense and Bureau of Indian Affairs schools?**

Two federal offices, the Department of Defense (DoD) and the Department of the Interior, also administer public schools. The Department of Defense administers schools inside and outside the boundaries of the United States for eligible minor dependents of DoD military and civilian personnel on official assignments. Over 100,000 students attended DoD schools in the 2000–01 school year (73,581 outside the United States and 34,174 inside the United States) (table 1). DoD schools accounted for over 7,504 teachers, and had a student-teacher ratio of 14.4 for schools outside the United States and 14.2 inside the United States (table 2). Over 50 percent of the DoD school students were White, non-Hispanic (table 5). Of the students in the overseas schools, 22 percent were Black, non-Hispanic, 7.8 percent were Hispanic, and 10.1 percent were Asian/Pacific Islander. Of domestic students, 26 percent were Black, non-Hispanic, 18.4 percent were Hispanic, and 3.5 percent were Asian/Pacific Islander.

Approximately 47,000 students attended the Department of the Interior, Bureau of Indian Affairs (BIA) schools (table 1). The governance of BIA schools differs from that of the federal DoD schools. The Education Amendments Act of 1978 (P.L. 95–561) and further technical amendments (P.L. 98–511, 99–89, and 100–297) mandated major changes in BIA funded schools. These amendments empowered Indian school boards, provided for local hiring of teachers and staff, and the direct funding of schools. The BIA does not report the number of staff or graduate counts.

**How many students are educated in Outlying Areas?**

Five outlying areas participate in the CCD collection: American Samoa, Guam, the Northern Marianas, Puerto Rico, and the Virgin Islands. Puerto Rico educates 612,725 public school students and is considered the third largest school district (table 1). The other four outlying areas are much smaller, with only 77,638 students combined in the 2000–01 school year. Student-teacher ratios ranged from 12.9 students per teacher (Virgin Islands) to 19.1 (American Samoa), exhibiting about the same range as the 50 states and the District of Columbia (table 2). Each outlying area has less than 2 percent White, non-Hispanic students (table 5). The majority of students in American Samoa, Guam, and the Northern Marianas are Asian/Pacific Islander; and in the Virgin Islands the majority of students are Black, non-Hispanic. Puerto Rico reported that all students are Hispanic.

## Technical notes

The *State Nonfiscal Survey of Public Elementary and Secondary Education* is an annual state-level collection of the numbers of staff, high school graduates, and students in grades prekindergarten through 12. The data are collected from state education agencies (SEAs), processed and edited by the U.S. Bureau of the Census, and then verified by NCES. The *State Nonfiscal Survey of Public Elementary and Secondary Education* is part of the Common Core of Data collection.

**Staff counts.** All staff counts (including teachers) are in full-time equivalency units. This is the amount of time required to perform an assignment stated as a proportion of a full-time position. It is computed by dividing the amount of time employed by the time normally required for a full time position. All states and outlying areas provided data for this survey. However, state agencies vary in their data collection and reporting systems, with resulting variations across states. Several states collapsed two or more categories of staff into one. In these cases, NCES disaggregated this number by distributing the reported amount to the several categories based on the average distribution of these staff in other states.

**Imputation of data items.** Data for prekindergarten students and staff that were missing and not reported elsewhere by the states were imputed. These items are noted as “imputed” in the data tables. The method used for imputing all variables other than prekindergarten students was to: (a) create a subset of states reporting the item in question; (b) calculate the ratio of the missing item to total student membership for each state in the subset; (c) calculate the average ratio of the item to total student membership for the subset; (d) multiply the total student membership of the state with the missing item by the average ratio; (e) substitute the imputed estimate for the missing item and then recompute the subtotals and totals. Missing prekindergarten student counts were imputed by first calculating an average ratio of prekindergarten students to total students minus prekindergarten students for reporting states, and then by following steps (d) and (e) above. Imputations on all states missing a specific data item are done at one time, ie. imputed values are not used in the imputation of another value. Imputation is only done on the 50 states and the District of Columbia. Totals and subtotals are noted in the tables when one or more items included in the total are imputed or adjusted.

**High school completers.** NCES made no adjustments or imputations to the high school diploma, high school equivalency, or other high school completion data. Not applicable was accepted as a valid response for other high school completers for the 1999–2000 school year.

The type of high school completions available to students varies by state policies. For example, in some states the only type of completion available is a regular diploma, while in other states, there are a variety of completion types available from regular diploma to a seat time certificate. For this reason, caution should be used in comparing states.

## Definitions

**Administrative Support Staff:** This category consists of staff members who provide direct support to local education agency and school administrators. This includes secretarial and other clerical staff, and persons whose activities are concerned with support of the teaching and administrative duties of the office of the principal or department chairpersons, or central office administrators.

**Diploma Recipients:** These are those graduates who received a diploma during the previous school year and subsequent summer school. A diploma recognizes that the recipient has successfully completed a prescribed course of studies at the secondary school level.

**Elementary/Secondary Teachers:** States report teachers in these categories. Elementary/secondary categories do not reflect the same grades in all states.

**High School Equivalency Recipients:** These are individuals age 19 or younger (except in Minnesota where they are age 20 or younger) who received a high school equivalency certificate during the previous school year or subsequent summer. This is a formal document certifying that an individual met the state requirements for high school graduation equivalency by obtaining satisfactory scores on an approved examination, and met other performance requirements (if any) set by a state education agency or other appropriate body.

**Membership Count:** This comprises the total student enrollment on October 1 (or the closest school day to October 1) for all grade levels (including prekindergarten and kindergarten) and ungraded pupils. Membership includes students both present and absent on the measurement day.

**Other High School Completers:** These are individuals who received a certificate of attendance, or other certificate of completion, in lieu of a diploma during the previous school year and subsequent summer school.

**Prekindergarten:** This is a group or class that is part of a public school program, and is taught during the year or years preceding kindergarten.

**Student/Other Support Staff:** This category consists of library and media support staff, professional and supervisory staff (e.g., school psychologists, social workers, attendance officers) providing non-instructional services to students, and support services staff not reported in other categories, (e.g., data processing, health, building and equipment maintenance, bus drivers, security, and food service workers). It combines the categories of library/media support staff, student support services staff, and other support staff that are reported on the Common Core of Data surveys.

**Teachers of Ungraded Classes:** This category includes teachers of classes or programs without standard grade designation.

**Ungraded Students:** These are students who are assigned to programs or classes without standard grade designation. States are requested to report teachers of ungraded classes even if all students are assigned a grade level of record (for example, in Florida).

**Table 1.— Public school student membership, by grade and state: School year 2000–01**

State	Total student membership	Pre-kindergarten	Kindergarten	Grade 1	Grade 2	Grade 3	Grade 4	Grade 5
<b>United States</b>	<b><sup>1</sup>47,222,778</b>	<b><sup>1</sup>795,597</b>	<b>3,381,629</b>	<b>3,634,724</b>	<b>3,632,608</b>	<b>3,673,058</b>	<b>3,707,931</b>	<b>3,702,792</b>
Alabama	<sup>1</sup> 740,176	<sup>1</sup> 11,020	55,112	59,669	58,887	59,263	59,749	60,123
Alaska	133,356	1,210	9,677	9,786	9,817	10,700	10,646	10,743
Arizona	877,696	2,037	68,347	74,491	71,402	72,603	72,295	72,371
Arkansas	449,959	2,001	33,941	34,541	33,904	35,147	35,724	35,924
California	<sup>1</sup> 6,142,348	<sup>1</sup> 91,453	459,771	487,058	490,510	482,278	489,043	490,557
Colorado	724,508	15,377	51,039	55,144	55,709	56,984	57,056	57,404
Connecticut	562,179	10,484	41,570	44,347	43,860	44,711	44,682	45,562
Delaware	114,676	706	7,691	9,233	9,208	9,015	8,848	8,643
District of Columbia	68,925	4,289	5,357	6,253	6,213	5,839	5,830	5,281
Florida	2,434,821	55,120	175,812	186,708	186,474	191,028	194,320	192,575
Georgia	1,444,937	32,248	110,960	114,049	114,939	115,691	116,678	117,973
Hawaii	184,360	840	14,071	14,988	14,825	14,928	15,291	15,532
Idaho	245,117	2,174	17,093	18,096	18,348	18,753	18,964	19,464
Illinois	2,048,792	60,712	147,619	161,147	159,858	161,530	160,495	160,537
Indiana	989,225	5,567	70,727	78,786	78,021	78,386	79,738	79,147
Iowa	495,080	5,797	33,977	33,946	34,952	35,818	36,448	36,975
Kansas	470,610	2,263	30,392	34,134	33,958	34,743	35,165	35,992
Kentucky	665,850	15,892	48,064	<sup>2</sup> 51,341	<sup>2</sup> 51,031	<sup>2</sup> 52,050	50,899	49,562
Louisiana	743,089	16,210	55,293	60,404	57,956	58,571	63,884	50,450
Maine	207,037	1,062	13,769	14,560	15,079	15,754	16,121	16,636
Maryland	852,920	20,031	56,073	63,751	65,339	65,834	69,279	67,431
Massachusetts	975,150	19,938	70,647	70,599	75,839	77,269	78,287	79,767
Michigan	<sup>1</sup> 1,743,337	<sup>1</sup> 25,956	126,906	128,129	128,396	129,141	130,886	133,155
Minnesota	854,340	9,300	58,963	59,417	60,882	62,312	63,334	65,674
Mississippi	497,871	1,682	37,373	41,465	40,169	40,176	40,177	39,797
Missouri	912,744	17,980	63,634	66,043	68,355	71,586	71,208	70,594
Montana	154,875	537	10,129	10,959	10,946	11,597	11,682	12,152
Nebraska	286,199	4,900	20,210	20,384	20,647	20,985	21,357	22,007
Nevada	340,706	1,888	26,445	28,411	28,123	28,693	28,616	28,626
New Hampshire	208,461	1,879	9,188	16,337	15,929	16,720	16,852	17,552
New Jersey	1,307,828	21,931	89,717	99,888	99,751	100,184	100,622	100,541
New Mexico	320,306	3,090	22,065	24,201	24,577	24,984	25,493	25,515
New York	2,882,188	39,062	194,673	217,654	216,309	218,270	217,881	217,452
North Carolina	1,293,638	8,722	101,049	106,296	104,297	106,105	105,105	105,402
North Dakota	109,201	701	7,146	7,610	7,646	7,748	7,982	8,104
Ohio	1,835,049	22,988	128,640	139,802	140,025	141,308	143,373	143,398
Oklahoma	623,110	23,475	42,979	50,038	45,785	47,008	47,064	47,164
Oregon	546,231	686	37,739	40,208	40,632	42,253	43,436	43,762
Pennsylvania	1,814,311	2,479	119,318	134,814	135,850	138,337	142,366	144,247
Rhode Island	157,347	1,055	10,521	12,527	12,064	12,372	12,490	12,551
South Carolina	677,411	17,340	47,277	52,055	52,705	53,984	54,468	51,092
South Dakota	128,603	967	8,989	9,075	9,316	9,517	9,583	9,894
Tennessee	<sup>1</sup> 909,388	<sup>1</sup> 13,539	70,351	72,708	71,412	72,467	73,373	73,286
Texas	4,059,619	145,771	294,217	320,752	316,896	316,535	313,731	311,638
Utah	481,687	6,418	36,039	35,873	35,291	36,298	35,910	35,934
Vermont	102,049	2,371	6,511	7,051	7,166	7,445	7,736	7,995
Virginia	1,144,915	7,263	82,585	89,072	89,287	91,217	92,073	92,300
Washington	1,004,770	7,283	68,531	73,521	75,432	77,945	78,505	79,830
West Virginia	286,367	6,152	20,937	21,283	21,056	21,634	21,995	21,936
Wisconsin	879,476	23,751	56,507	59,962	61,205	62,810	64,455	65,570
Wyoming	89,940	(†)	5,988	6,158	6,330	6,532	6,736	6,975
Outlying Areas, DoD Dependents Schools, and Bureau of Indian Affairs								
Bureau of Indian Affairs <sup>3</sup>	46,938	—	—	4,125	4,045	4,187	4,021	3,775
DOD Overseas	73,581	1,846	6,892	7,136	6,905	7,019	6,570	6,453
DOD Domestic	34,174	3,357	4,068	3,873	3,628	3,442	3,089	2,901
American Samoa	15,702	1,369	1,038	1,254	1,330	1,266	1,157	1,170
Guam	32,473	570	2,596	2,767	2,288	2,718	2,613	2,707
Northern Marianas	10,004	579	589	858	941	825	890	834
Puerto Rico	612,725	1,139	42,957	49,807	48,585	46,956	47,296	49,553
Virgin Islands	19,459	(†)	1,189	1,391	1,409	1,548	1,650	1,554

**Table 1.— Public school student membership, by grade and state: School year 2000–01—Continued**

State	Grade 6	Grade 7	Grade 8	Grade 9	Grade 10	Grade 11	Grade 12	Ungraded
<b>United States</b>	<b>3,658,460</b>	<b>3,623,913</b>	<b>3,532,370</b>	<b>3,958,471</b>	<b>3,486,928</b>	<b>3,080,361</b>	<b>2,799,484</b>	<b>554,542</b>
Alabama	58,825	59,219	56,951	60,463	51,991	46,392	42,512	(†)
Alaska	10,624	10,862	10,377	11,582	10,110	8,887	8,335	(†)
Arizona	69,828	69,110	65,526	70,727	63,765	52,940	49,501	2,753
Arkansas	35,416	35,562	34,873	36,078	34,958	31,557	28,918	1,415
California	464,494	458,823	441,877	485,910	455,134	409,119	357,789	78,532
Colorado	56,330	56,139	55,386	61,200	54,010	49,250	43,480	(†)
Connecticut	44,536	44,096	42,597	45,525	40,608	37,010	32,591	(†)
Delaware	8,841	9,541	9,075	10,628	8,887	7,256	7,104	(†)
District of Columbia	4,777	3,766	3,371	4,207	3,606	3,183	2,785	4,168
Florida	197,293	194,909	185,663	238,825	170,385	145,900	119,809	(†)
Georgia	116,072	112,249	109,124	126,793	99,934	85,910	72,317	(†)
Hawaii	14,579	13,772	13,424	15,915	13,148	12,560	10,408	79
Idaho	18,988	19,481	19,045	19,537	19,358	18,430	17,371	15
Illinois	158,587	151,830	149,045	165,220	150,473	132,793	124,760	4,186
Indiana	79,024	77,400	73,888	79,922	73,210	67,180	63,503	4,726
Iowa	36,576	36,704	36,458	40,660	39,929	37,592	36,892	12,356
Kansas	35,663	36,091	36,085	39,170	37,229	34,300	33,085	12,340
Kentucky	48,433	49,681	48,938	58,299	49,055	44,583	39,879	28,143
Louisiana	58,038	58,826	61,997	53,940	52,819	46,058	41,836	6,807
Maine	16,917	17,269	17,035	17,134	15,842	14,465	13,341	2,053
Maryland	67,323	66,493	64,647	71,705	62,410	55,766	50,962	5,876
Massachusetts	78,971	76,731	74,527	78,201	71,430	64,622	58,322	(†)
Michigan	127,565	124,898	123,080	134,402	121,513	105,759	94,837	108,714
Minnesota	65,148	66,482	66,254	70,729	71,064	67,208	67,573	(†)
Mississippi	38,479	38,919	36,588	39,390	33,717	28,773	26,291	14,875
Missouri	70,128	69,747	68,717	75,148	69,939	62,166	58,103	9,396
Montana	12,070	12,431	12,517	13,359	12,861	11,974	11,371	290
Nebraska	21,495	21,637	21,864	24,236	23,378	21,948	21,151	(†)
Nevada	27,340	26,550	25,327	29,972	19,998	21,477	18,519	721
New Hampshire	17,460	17,240	17,209	17,578	16,160	14,492	13,024	841
New Jersey	100,555	97,228	92,094	95,640	88,360	79,859	74,232	67,226
New Mexico	25,172	24,912	24,870	28,944	25,476	21,905	19,102	(†)
New York	214,004	213,426	203,482	245,291	217,734	167,953	151,043	147,954
North Carolina	106,091	103,062	99,295	112,416	91,446	77,475	66,831	46
North Dakota	8,210	8,623	8,651	9,314	9,374	9,020	9,072	(†)
Ohio	142,996	142,969	139,740	156,710	139,229	125,760	119,704	8,407
Oklahoma	46,769	46,455	46,276	49,667	45,912	41,721	39,409	3,388
Oregon	43,569	42,676	42,364	45,541	43,602	39,984	37,055	2,724
Pennsylvania	144,127	146,032	143,638	157,559	142,177	128,868	122,048	12,451
Rhode Island	12,557	12,394	11,750	12,819	11,272	10,341	9,184	3,450
South Carolina	56,124	54,922	53,259	63,776	48,628	37,870	33,911	(†)
South Dakota	9,999	10,084	10,303	11,043	10,389	9,932	9,354	158
Tennessee	71,180	69,159	66,429	73,141	64,349	54,746	48,802	14,446
Texas	308,392	310,696	304,419	360,704	287,355	248,570	219,943	(†)
Utah	35,190	35,520	34,579	35,538	36,489	36,210	35,484	10,914
Vermont	8,125	7,915	8,005	8,595	7,998	7,799	7,232	105
Virginia	91,743	88,338	87,455	98,371	86,395	74,045	70,337	4,434
Washington	78,729	77,431	77,160	87,322	80,453	74,048	68,580	(†)
West Virginia	22,055	22,007	21,902	23,723	21,849	19,684	19,716	438
Wisconsin	66,163	66,367	67,950	78,140	73,796	67,605	65,195	(†)
Wyoming	6,890	7,239	7,284	7,762	7,724	7,416	6,881	25
.....								
Outlying Areas, DoD Dependents Schools, and Bureau of Indian Affairs								
Bureau of Indian Affairs	4,026	3,724	3,634	3,826	3,024	2,376	1,966	(†)
DOD Overseas	6,017	5,504	4,957	4,445	3,912	3,190	2,735	(†)
DOD Domestic	2,657	1,854	1,712	1,305	882	696	594	116
American Samoa	1,131	1,071	1,109	1,103	1,008	906	745	45
Guam	2,628	2,493	2,318	3,490	2,279	1,592	1,414	(†)
Northern Marianas	773	759	714	848	541	464	342	47
Puerto Rico	48,922	50,091	46,852	44,362	45,072	38,217	33,567	19,349
Virgin Islands	1,427	1,883	1,515	1,798	1,311	1,150	1,021	613

— Data missing.

† Not applicable.

<sup>1</sup> Data imputed based on current year (fall 2000) data.

<sup>2</sup> Data disaggregated from reported total.

<sup>3</sup> Total students includes 4,209 students for which a grade level could not be determined.

SOURCE: U.S. Department of Education, National Center for Education Statistics, Common Core of Data, "State Nonfiscal Survey of Public Elementary/Secondary Education," 2000–01.

**Table 2.—Public school student/teacher ratio, student membership, and teachers, by level of instruction and state:**

**School year 2000–01**

State	Total student/ teacher ratio	Total student membership	Total teachers	Pre- kindergarten teachers	Kindergarten teachers	Elementary teachers	Secondary teachers	Teachers of ungraded classes
<b>United States</b>	<b>16.0</b>	<b>47,222,778</b>	<b>2,952,991</b>	<b>34,322</b>	<b>146,996</b>	<b>1,492,151</b>	<b>1,056,601</b>	<b>222,921</b>
Alabama	15.4	1,740,176	148,199	1,612	3,410	23,910	20,267	(†)
Alaska	16.9	133,356	7,880	38	330	4,747	2,765	(†)
Arizona	19.8	877,696	44,438	142	1,709	30,065	12,522	(†)
Arkansas	14.1	449,959	31,947	100	1,975	11,866	13,665	4,341
California	20.6	6,142,348	298,064	5,078	23,400	189,815	75,568	4,203
Colorado	17.3	724,508	41,983	439	2,267	18,703	20,574	(†)
Connecticut	13.7	562,179	41,044	184	1,521	22,399	11,944	4,996
Delaware	15.3	114,676	7,471	11	231	3,540	3,689	(†)
District of Columbia	13.9	68,925	4,949	213	264	2,675	1,248	549
Florida	18.4	2,434,821	132,030	900	6,933	49,909	51,028	23,260
Georgia	15.9	1,444,937	91,044	1,921	5,283	45,831	38,009	(†)
Hawaii	16.9	184,360	10,927	<sup>2</sup> 118	<sup>2</sup> 464	<sup>2</sup> 5,402	4,896	47
Idaho	17.9	245,117	13,714	97	475	6,409	6,733	(†)
Illinois	16.1	2,048,792	127,620	1,530	4,927	70,026	31,727	19,410
Indiana	16.7	989,225	59,226	408	2,406	28,026	25,683	2,703
Iowa	14.3	495,080	34,636	461	2,074	18,459	12,368	1,274
Kansas	14.4	470,610	32,742	262	1,168	13,198	14,680	3,434
Kentucky	16.8	665,850	39,589	728	1,311	19,503	11,750	6,297
Louisiana	14.9	743,089	49,916	472	2,626	31,677	14,797	344
Maine	12.5	207,037	16,559	<sup>2</sup> 221	<sup>2</sup> 870	<sup>2</sup> 10,141	5,327	(†)
Maryland	16.3	852,920	52,433	628	1,900	28,990	20,915	(†)
Massachusetts	14.5	975,150	67,432	959	2,492	27,765	30,300	5,916
Michigan	18.0	1,743,337	97,031	1,029	3,820	36,561	43,234	12,387
Minnesota	16.0	854,340	53,457	1,152	2,037	24,761	25,507	(†)
Mississippi	16.1	497,871	31,006	226	1,554	13,793	10,126	5,307
Missouri	14.1	912,744	64,739	1,267	3,252	28,221	31,385	614
Montana	14.9	154,875	10,411	<sup>2</sup> 140	<sup>2</sup> 550	<sup>2</sup> 6,407	3,314	(†)
Nebraska	13.6	286,199	20,983	<sup>2</sup> 248	<sup>2</sup> 978	<sup>2</sup> 11,392	8,365	(†)
Nevada	18.6	340,706	18,294	285	562	8,606	6,691	2,150
New Hampshire	14.5	208,461	14,341	97	320	9,565	4,359	(†)
New Jersey	13.1	1,307,828	99,718	311	3,524	53,838	27,688	14,357
New Mexico	15.2	320,306	21,043	256	986	10,726	4,777	4,298
New York	13.9	2,882,188	206,961	2,356	11,653	93,891	68,649	30,412
North Carolina	15.5	1,293,638	83,680	835	5,354	44,563	29,357	3,571
North Dakota	13.4	109,201	8,141	111	273	4,478	3,279	(†)
Ohio	15.5	1,835,049	118,361	1,280	4,433	73,499	38,971	178
Oklahoma	15.1	623,110	41,318	635	1,610	17,184	17,707	4,182
Oregon	19.4	546,231	28,094	40	1,028	13,965	8,229	4,832
Pennsylvania	15.5	1,814,311	116,963	<sup>2</sup> 1,059	<sup>2</sup> 4,167	<sup>2</sup> 48,548	48,018	15,171
Rhode Island	14.8	157,347	10,646	17	246	4,372	4,405	1,606
South Carolina	14.9	677,411	45,380	495	2,062	29,820	12,835	168
South Dakota	13.7	128,603	9,397	96	369	5,249	2,650	1,033
Tennessee	14.9	1,909,388	61,233	245	3,823	40,357	15,585	1,223
Texas	14.8	4,059,619	274,826	4,818	15,184	114,821	108,539	31,464
Utah	21.9	481,687	22,008	191	845	9,536	9,027	2,409
Vermont	12.1	102,049	8,414	62	303	2,844	3,086	2,119
Virginia	12.5	1,144,915	191,560	<sup>1</sup> 403	<sup>2</sup> 3,926	<sup>2</sup> 45,896	41,335	(†)
Washington	19.7	1,004,770	51,098	41	2,017	23,757	20,426	4,857
West Virginia	13.7	286,367	20,930	177	1,111	9,005	6,905	3,732
Wisconsin	14.1	879,476	62,332	928	2,752	40,445	18,207	(†)
Wyoming	13.3	89,940	6,783	†	221	2,995	3,490	77
Outlying Areas, DoD Dependents Schools, and Bureau of Indian Affairs								
Bureau of Indian Affairs	—	46,938	—	—	—	—	—	(†)
DOD Overseas	14.4	73,581	5,105	71	276	1,656	1,607	1,495
DOD Domestic	14.2	34,174	2,399	93	180	893	509	725
American Samoa	19.1	15,702	820	119	39	424	223	15
Guam	16.4	32,473	1,975	25	114	838	998	(†)
Northern Marianas	19.0	10,004	526	2	23	283	215	3
Puerto Rico	16.3	612,725	37,620	68	1,248	18,660	14,449	3,195
Virgin Islands	12.9	19,459	1,511	†	62	665	733	51

— Data missing.

† Not applicable.

<sup>1</sup> Data imputed based on current year (fall 2000) data.

<sup>2</sup> Data disaggregated from reported total.

NOTE: Teacher counts are full-time equivalency (FTE) counts. Elementary and secondary teacher counts are not directly comparable across states due to differences in the grades included in these designations.

SOURCE: U.S. Department of Education, National Center for Education Statistics, Common Core of Data, "State Nonfiscal Survey of Public Elementary/Secondary Education," 2000–01.

**Table 3.—Number of staff employed by public elementary and secondary school systems and percentage of total staff, by category and state: School year 2000–01**

State	Total staff	Teachers		Instructional aides		Instructional coordinators and supervisors		Guidance counselors	
		Number	Percent	Number	Percent	Number	Percent	Number	Percent
<b>United States</b>	<b>15,726,822</b>	<b>12,952,991</b>	<b>51.6</b>	<b>1,642,294</b>	<b>11.2</b>	<b>140,664</b>	<b>0.7</b>	<b>97,369</b>	<b>1.7</b>
Alabama	89,823	48,199	53.7	6,738	7.5	484	0.5	1,686	1.9
Alaska	15,988	7,880	49.3	2,197	13.7	139	0.9	260	1.6
Arizona	90,115	44,438	49.3	12,391	13.8	153	0.2	1,152	1.3
Arkansas	61,917	31,947	51.6	6,061	9.8	299	0.5	1,427	2.3
California	1539,301	1298,064	55.3	63,852	11.8	6,342	1.2	6,398	1.2
Colorado	82,827	41,983	50.7	9,124	11.0	816	1.0	1,233	1.5
Connecticut	82,107	41,044	50.0	10,954	13.3	422	0.5	1,232	1.5
Delaware	12,618	7,471	59.2	928	7.4	135	1.1	235	1.9
District of Columbia	10,712	4,949	46.2	1,154	10.8	12	0.1	200	1.9
Florida	276,421	132,030	47.8	30,582	11.1	759	0.3	5,465	2.0
Georgia	184,867	91,044	49.2	21,612	11.7	1,205	0.7	3,074	1.7
Hawaii	18,352	10,927	59.5	1,316	7.2	445	2.4	628	3.4
Idaho	24,386	13,714	56.2	2,518	10.3	266	1.1	587	2.4
Illinois	1250,643	127,620	50.9	131,036	12.4	2,084	0.8	2,968	1.2
Indiana	126,834	59,226	46.7	17,708	14.0	1,533	1.2	1,832	1.4
Iowa	67,765	34,636	51.1	8,307	12.3	419	0.6	1,228	1.8
Kansas	64,152	32,742	51.0	6,902	10.8	106	0.2	1,167	1.8
Kentucky	89,674	39,589	44.1	14,487	16.2	141	0.2	1,305	1.5
Louisiana	101,201	49,916	49.3	10,945	10.8	1,212	1.2	3,047	3.0
Maine	33,305	16,559	49.7	5,434	16.3	162	0.5	643	1.9
Maryland	96,504	52,433	54.3	8,849	9.2	1,198	1.2	2,080	2.2
Massachusetts	122,481	67,432	55.1	15,667	12.8	1,159	0.9	2,347	1.9
Michigan	210,481	97,031	46.1	24,596	11.7	1,007	0.5	3,110	1.5
Minnesota	1103,570	53,457	51.6	15,283	14.8	509	0.5	1,029	1.0
Mississippi	64,723	31,006	47.9	8,652	13.4	594	0.9	963	1.5
Missouri	121,614	64,739	53.2	10,530	8.7	828	0.7	2,655	2.2
Montana	119,512	10,411	53.4	12,346	12.0	159	0.8	433	2.2
Nebraska	39,925	20,983	52.6	4,277	10.7	347	0.9	769	1.9
Nevada	31,192	18,294	58.6	2,174	7.0	102	0.3	683	2.2
New Hampshire	28,055	14,341	51.1	5,056	18.0	175	0.6	739	2.6
New Jersey	186,523	99,718	53.5	19,785	10.6	2,994	1.6	3,124	1.7
New Mexico	44,980	21,043	46.8	5,102	11.3	581	1.3	706	1.6
New York	416,236	206,961	49.7	40,618	9.8	1,920	0.5	6,072	1.5
North Carolina	162,431	83,680	51.5	27,447	16.9	817	0.5	3,302	2.0
North Dakota	15,115	8,141	53.9	1,716	11.4	98	0.6	274	1.8
Ohio	222,961	118,361	53.1	14,862	6.7	459	0.2	3,495	1.6
Oklahoma	75,148	41,318	55.0	6,366	8.5	173	0.2	1,566	2.1
Oregon	56,168	28,094	50.0	8,106	14.4	301	0.5	1,232	2.2
Pennsylvania	223,935	116,963	52.2	22,508	10.1	1,441	0.6	4,098	1.8
Rhode Island	17,737	10,646	60.0	2,295	12.9	53	0.3	288	1.6
South Carolina	185,584	45,380	53.0	10,262	12.0	561	0.7	1,685	2.0
South Dakota	18,072	9,397	52.0	2,280	12.6	369	2.0	324	1.8
Tennessee	113,272	61,233	54.1	12,532	11.1	981	0.9	1,801	1.6
Texas	542,791	274,826	50.6	55,468	10.2	1,288	0.2	9,439	1.7
Utah	40,717	22,008	54.1	5,426	13.3	599	1.5	637	1.6
Vermont	17,772	8,414	47.3	3,928	22.1	292	1.6	393	2.2
Virginia	1167,074	191,560	54.8	16,096	9.6	1,699	1.0	3,311	2.0
Washington	97,636	51,098	52.3	10,375	10.6	801	0.8	1,957	2.0
West Virginia	38,549	20,930	54.3	3,018	7.8	339	0.9	661	1.7
Wisconsin	109,104	62,332	57.1	10,696	9.8	1,505	1.4	2,055	1.9
Wyoming	13,952	6,783	48.6	1,732	12.4	181	1.3	374	2.7
Outlying Areas, DoD Dependents Schools, and Bureau of Indian Affairs									
Bureau of Indian Affairs	—	—	—	—	—	—	—	—	—
DOD Overseas	7,736	5,105	66.0	531	6.9	83	1.1	237	3.1
DOD Domestic	4,054	2,399	59.2	417	10.3	70	1.7	110	2.7
American Samoa	1,639	820	50.0	127	7.7	35	2.1	38	2.3
Guam	3,836	1,975	51.5	693	18.1	125	3.3	34	0.9
Northern Marianas	1,047	526	50.2	216	20.6	6	0.6	15	1.4
Puerto Rico	69,188	37,620	54.4	236	0.3	397	0.6	866	1.3
Virgin Islands	2,899	1,511	52.1	307	10.6	19	0.7	81	2.8

**Table 3.—Number of staff employed by public elementary and secondary school systems and percentage of total staff, by category and state: School year 2000–01—Continued**

State	Librarians		Student/other support staff <sup>3</sup>		School administrators		School district administrators		Administrative support staff	
	Number	Percent	Number	Percent	Number	Percent	Number	Percent	Number	Percent
<b>United States</b>	<b>54,281</b>	<b>0.9</b>	<b>1,358,270</b>	<b>23.7</b>	<b>141,407</b>	<b>2.5</b>	<b>58,891</b>	<b>1.0</b>	<b>1,380,655</b>	<b>6.6</b>
Alabama	1,317	1.5	23,467	26.1	3,294	3.7	1,203	1.3	3,435	3.8
Alaska	140	0.9	2,939	18.4	739	4.6	239	1.5	1,455	9.1
Arizona	811	0.9	21,921	24.3	2,008	2.2	393	0.4	6,848	7.6
Arkansas	1,011	1.6	16,708	27.0	1,617	2.6	671	1.1	2,176	3.5
California	1,386	0.3	<sup>2</sup> 96,544	17.9	13,009	2.4	2,599	0.5	51,107	9.5
Colorado	800	1.0	19,541	23.6	2,200	2.7	882	1.1	6,248	7.5
Connecticut	743	0.9	19,798	24.1	2,063	2.5	1,201	1.5	4,650	5.7
Delaware	120	1.0	2,386	18.9	349	2.8	268	2.1	726	5.8
District of Columbia	122	1.1	2,976	27.8	267	2.5	15	0.1	1,017	9.5
Florida	2,646	1.0	68,968	25.0	6,332	2.3	1,736	0.6	27,903	10.1
Georgia	2,069	1.1	50,268	27.2	4,573	2.5	1,726	0.9	9,296	5.0
Hawaii	291	1.6	3,202	17.4	475	2.6	136	0.7	932	5.1
Idaho	189	0.8	4,947	20.3	715	2.9	121	0.5	1,329	5.4
Illinois	1,986	0.8	<sup>1</sup> 58,700	23.4	5,812	2.3	3,887	1.6	<sup>1</sup> 16,550	6.6
Indiana	1,063	0.8	33,979	26.8	2,946	2.3	942	0.7	7,605	6.0
Iowa	673	1.0	15,134	22.3	2,119	3.1	1,112	1.6	4,137	6.1
Kansas	1,002	1.6	15,983	24.9	1,755	2.7	1,234	1.9	3,261	5.1
Kentucky	1,061	1.2	26,256	29.3	1,856	2.1	486	0.5	4,493	5.0
Louisiana	1,212	1.2	28,109	27.8	2,611	2.6	319	0.3	3,830	3.8
Maine	248	0.7	<sup>2</sup> 7,035	21.1	902	2.7	527	1.6	<sup>2</sup> 1,795	5.4
Maryland	1,106	1.1	22,060	22.9	3,058	3.2	1,049	1.1	4,671	4.8
Massachusetts	944	0.8	22,003	18.0	3,083	2.5	1,817	1.5	8,029	6.6
Michigan	1,623	0.8	65,556	31.1	5,394	2.6	2,085	1.0	10,079	4.8
Minnesota	1,016	1.0	21,750	21.0	1,871	1.8	1,973	1.9	<sup>1</sup> 6,682	6.5
Mississippi	983	1.5	16,160	25.0	1,686	2.6	980	1.5	3,699	5.7
Missouri	1,614	1.3	<sup>2</sup> 24,932	20.5	2,967	2.4	1,223	1.0	<sup>2</sup> 12,126	10.0
Montana	365	1.9	<sup>1</sup> 3,893	20.0	502	2.6	152	0.8	<sup>1</sup> 1,251	6.4
Nebraska	565	1.4	9,557	23.9	972	2.4	543	1.4	<sup>2</sup> 1,912	4.8
Nevada	299	1.0	6,612	21.2	908	2.9	223	0.7	1,897	6.1
New Hampshire	284	1.0	<sup>2</sup> 5,255	18.7	540	1.9	439	1.6	<sup>2</sup> 1,226	4.4
New Jersey	1,776	1.0	37,086	19.9	4,737	2.5	1,375	0.7	15,928	8.5
New Mexico	282	0.6	11,158	24.8	984	2.2	1,616	3.6	3,508	7.8
New York	3,135	0.8	115,296	27.7	7,668	1.8	2,925	0.7	31,641	7.6
North Carolina	2,284	1.4	38,723	23.8	4,551	2.8	1,547	1.0	80	0.0
North Dakota	192	1.3	3,346	22.1	406	2.7	457	3.0	485	3.2
Ohio	1,646	0.7	49,774	22.3	5,112	2.3	5,753	2.6	23,499	10.5
Oklahoma	1,019	1.4	16,890	22.5	2,023	2.7	728	1.0	5,065	6.7
Oregon	555	1.0	10,928	19.5	1,631	2.9	838	1.5	4,483	8.0
Pennsylvania	2,237	1.0	55,566	24.8	4,392	2.0	1,537	0.7	15,193	6.8
Rhode Island	53	0.3	2,614	14.7	338	1.9	155	0.9	1,295	7.3
South Carolina	1,123	1.3	<sup>1</sup> 17,981	21.0	2,862	3.3	258	0.3	<sup>1</sup> 5,472	6.4
South Dakota	173	1.0	3,804	21.0	426	2.4	454	2.5	845	4.7
Tennessee	1,497	1.3	<sup>2</sup> 23,025	20.3	4,188	3.7	1,092	1.0	<sup>2</sup> 6,923	6.1
Texas	4,735	0.9	<sup>2</sup> 155,262	28.6	13,550	2.5	2,844	0.5	25,379	4.7
Utah	309	0.8	7,967	19.6	956	2.3	106	0.3	2,709	6.7
Vermont	235	1.3	3,022	17.0	421	2.4	143	0.8	924	5.2
Virginia	2,094	1.3	33,835	20.3	3,901	2.3	4,264	2.6	10,314	6.2
Washington	1,301	1.3	<sup>2</sup> 21,767	22.3	2,692	2.8	1,132	1.2	6,513	6.7
West Virginia	389	1.0	9,556	24.8	1,077	2.8	358	0.9	2,221	5.8
Wisconsin	1,430	1.3	20,805	19.1	2,529	2.3	937	0.9	6,815	6.2
Wyoming	127	0.9	3,226	23.1	340	2.4	191	1.4	998	7.2
Outlying Areas, DoD Dependents Schools, and Bureau of Indian Affairs										
Bureau of Indian Affairs	—	—	—	—	—	—	—	—	—	—
DOD Overseas	157	2.0	596	7.7	269	3.5	44	0.6	714	9.2
DOD Domestic	72	1.8	501	12.4	118	2.9	31	0.8	336	8.3
American Samoa	6	0.4	388	23.7	63	3.8	34	2.1	128	7.8
Guam	16	0.4	224	5.8	51	1.3	21	0.5	697	18.2
Northern Marianas	0	0.0	151	14.4	28	2.7	9	0.9	96	9.2
Puerto Rico	821	1.2	21,574	31.2	1,399	2.0	1,721	2.5	4,554	6.6
Virgin Islands	34	1.2	570	19.7	86	3.0	79	2.7	212	7.3

— Data missing.

<sup>1</sup> Data imputed based on current year (fall 2000) data.

<sup>2</sup> Data disaggregated from reported total.

<sup>3</sup> Student/other support services includes library support staff, student support services staff, and all other support staff.

NOTE: All staff counts are full-time-equivalency (FTE) counts.

SOURCE: U.S. Department of Education, National Center for Education Statistics, Common Core of Data, "State Nonfiscal Survey of Public Elementary/Secondary Education," 2000–01.



**Table 4.—Public school membership, by race/ethnicity and state: School year 2000–01**

State	Students reported <sup>1</sup>	American Indian/Alaska Native	Asian/Pacific Islander	Black non-Hispanic	Hispanic	White non-Hispanic
<b>United States</b>	<b>47,018,606</b>	<b>548,492</b>	<b>1,935,593</b>	<b>8,081,344</b>	<b>7,668,222</b>	<b>28,784,955</b>
Alabama	728,327	5,190	5,383	265,600	9,543	442,611
Alaska	133,356	33,399	7,337	6,078	4,493	82,049
Arizona	877,696	58,159	18,049	40,483	297,703	463,302
Arkansas	449,959	2,202	3,951	104,947	16,163	322,696
California	6,015,676	51,926	667,630	510,779	2,613,480	2,171,861
Colorado	724,508	8,701	20,932	40,967	159,600	494,308
Connecticut	562,179	1,559	15,596	77,156	73,922	393,946
Delaware	114,710	299	2,620	35,347	6,843	69,601
District of Columbia	68,925	40	1,112	58,320	6,340	3,113
Florida	2,434,821	6,593	45,879	613,364	472,029	1,296,956
Georgia	1,444,937	2,330	32,127	551,805	68,760	789,915
Hawaii	184,360	776	133,382	4,278	8,312	37,612
Idaho	245,009	3,310	3,005	1,827	26,121	210,746
Illinois	2,048,792	3,474	68,796	436,568	315,446	1,224,508
Indiana	989,225	2,104	9,705	115,586	34,757	827,073
Iowa	495,080	2,562	8,471	19,723	17,635	446,689
Kansas	465,911	6,081	10,325	41,347	41,452	366,706
Kentucky	641,141	1,213	4,124	68,356	6,219	561,229
Louisiana	743,089	4,725	9,392	355,290	10,485	363,197
Maine	207,037	1,377	2,151	2,476	1,265	199,768
Maryland	852,920	3,007	37,201	316,231	41,317	455,164
Massachusetts	975,150	2,711	43,004	83,228	104,207	742,000
Michigan	1,722,022	17,582	31,350	341,246	60,298	1,271,546
Minnesota	854,340	17,196	43,353	56,558	28,736	708,497
Mississippi	497,870	733	3,366	254,343	3,806	235,622
Missouri	912,744	2,875	10,617	159,199	16,669	723,384
Montana	154,875	16,293	1,473	877	2,658	133,574
Nebraska	286,199	4,370	4,345	19,102	20,762	237,620
Nevada	340,696	5,922	19,272	34,591	87,696	193,215
New Hampshire	208,461	477	2,694	2,340	3,827	199,123
New Jersey	1,307,828	2,626	82,432	233,334	200,652	788,784
New Mexico	320,306	35,595	3,461	7,622	160,708	112,920
New York	2,882,188	11,531	172,353	581,855	533,645	1,582,804
North Carolina	1,293,638	18,994	23,953	404,856	57,177	788,658
North Dakota	109,201	8,292	860	1,074	1,363	97,612
Ohio	1,835,049	2,292	20,722	299,874	31,049	1,481,112
Oklahoma	623,073	105,459	8,818	67,181	37,103	404,512
Oregon	536,918	11,424	21,581	15,590	56,453	431,870
Pennsylvania	1,814,311	2,240	36,325	274,697	81,641	1,419,408
Rhode Island	157,347	791	5,123	12,415	22,069	116,949
South Carolina	677,348	1,621	6,496	284,890	12,807	371,534
South Dakota	128,603	13,038	1,200	1,525	1,585	111,255
Tennessee	906,210	1,445	10,278	222,068	15,966	656,453
Texas	4,059,619	12,091	108,422	585,609	1,646,508	1,706,989
Utah	479,435	7,440	13,120	4,627	42,326	411,922
Vermont	102,049	577	1,446	1,117	596	98,313
Virginia	1,144,915	3,214	47,429	310,107	55,860	728,305
Washington	1,004,770	27,212	73,663	53,205	102,925	747,765
West Virginia	286,367	296	1,530	12,338	1,056	271,147
Wisconsin	879,476	12,342	28,959	88,253	39,958	709,964
Wyoming	89,940	2,786	780	1,095	6,231	79,048
Outlying Areas, DoD Dependents Schools, and Bureau of Indian Affairs						
Bureau of Indian Affairs <sup>2</sup>	46,938	46,938	0	0	0	0
DOD Overseas	58,773	498	5,959	12,694	4,576	35,046
DOD Domestic	29,807	200	1,055	7,739	5,492	15,321
American Samoa	15,702	0	15,702	0	0	0
Guam	32,473	28	31,724	106	68	547
Northern Marianas	10,004	0	9,972	5	0	27
Puerto Rico <sup>2</sup>	612,725	0	0	0	612,725	0
Virgin Islands	19,461	20	46	16,693	2,552	150

— Data missing.

<sup>1</sup>Total excludes students for whom race/ethnicity was not reported.<sup>2</sup>Puerto Rico and the BIA reported all of their students in one race/ethnicity.

SOURCE: U.S. Department of Education, National Center for Education Statistics, Common Core of Data, "State Nonfiscal Survey of Public Elementary/Secondary Education," 2000–01.

**Table 5.—Percentage of public school membership by race/ethnicity and state: School year 2000–01**

State	Total reported <sup>1</sup>	American Indian/Alaska Native	Asian/Pacific Islander	Black non-Hispanic	Hispanic	White non-Hispanic
<b>United States</b>	<b>100.0</b>	<b>1.2</b>	<b>4.1</b>	<b>17.2</b>	<b>16.3</b>	<b>61.2</b>
Alabama	100.0	0.7	0.7	36.5	1.3	60.8
Alaska	100.0	25.0	5.5	4.6	3.4	61.5
Arizona	100.0	6.6	2.1	4.6	33.9	52.8
Arkansas	100.0	0.5	0.9	23.3	3.6	71.7
California	100.0	0.9	11.1	8.5	43.4	36.1
Colorado	100.0	1.2	2.9	5.7	22.0	68.2
Connecticut	100.0	0.3	2.8	13.7	13.1	70.1
Delaware	100.0	0.3	2.3	30.8	6.0	60.7
District of Columbia	100.0	0.1	1.6	84.6	9.2	4.5
Florida	100.0	0.3	1.9	25.2	19.4	53.3
Georgia	100.0	0.2	2.2	38.2	4.8	54.7
Hawaii	100.0	0.4	72.3	2.3	4.5	20.4
Idaho	100.0	1.4	1.2	0.7	10.7	86.0
Illinois	100.0	0.2	3.4	21.3	15.4	59.8
Indiana	100.0	0.2	1.0	11.7	3.5	83.6
Iowa	100.0	0.5	1.7	4.0	3.6	90.2
Kansas	100.0	1.3	2.2	8.9	8.9	78.7
Kentucky	100.0	0.2	0.6	10.7	1.0	87.5
Louisiana	100.0	0.6	1.3	47.8	1.4	48.9
Maine	100.0	0.7	1.0	1.2	0.6	96.5
Maryland	100.0	0.4	4.4	37.1	4.8	53.4
Massachusetts	100.0	0.3	4.4	8.5	10.7	76.1
Michigan	100.0	1.0	1.8	19.8	3.5	73.8
Minnesota	100.0	2.0	5.1	6.6	3.4	82.9
Mississippi	100.0	0.1	0.7	51.1	0.8	47.3
Missouri	100.0	0.3	1.2	17.4	1.8	79.3
Montana	100.0	10.5	1.0	0.6	1.7	86.2
Nebraska	100.0	1.5	1.5	6.7	7.3	83.0
Nevada	100.0	1.7	5.7	10.2	25.7	56.7
New Hampshire	100.0	0.2	1.3	1.1	1.8	95.5
New Jersey	100.0	0.2	6.3	17.8	15.3	60.3
New Mexico	100.0	11.1	1.1	2.4	50.2	35.3
New York	100.0	0.4	6.0	20.2	18.5	54.9
North Carolina	100.0	1.5	1.9	31.3	4.4	61.0
North Dakota	100.0	7.6	0.8	1.0	1.2	89.4
Ohio	100.0	0.1	1.1	16.3	1.7	80.7
Oklahoma	100.0	16.9	1.4	10.8	6.0	64.9
Oregon	100.0	2.1	4.0	2.9	10.5	80.4
Pennsylvania	100.0	0.1	2.0	15.1	4.5	78.2
Rhode Island	100.0	0.5	3.3	7.9	14.0	74.3
South Carolina	100.0	0.2	1.0	42.1	1.9	54.9
South Dakota	100.0	10.1	0.9	1.2	1.2	86.5
Tennessee	100.0	0.2	1.1	24.5	1.8	72.4
Texas	100.0	0.3	2.7	14.4	40.6	42.0
Utah	100.0	1.6	2.7	1.0	8.8	85.9
Vermont	100.0	0.6	1.4	1.1	0.6	96.3
Virginia	100.0	0.3	4.1	27.1	4.9	63.6
Washington	100.0	2.7	7.3	5.3	10.2	74.4
West Virginia	100.0	0.1	0.5	4.3	0.4	94.7
Wisconsin	100.0	1.4	3.3	10.0	4.5	80.7
Wyoming	100.0	3.1	0.9	1.2	6.9	87.9
.....						
Outlying Areas, DoD Dependents Schools, and Bureau of Indian Affairs						
Bureau of Indian Affairs <sup>2</sup>	100.0	100.0	0.0	0.0	0.0	0.0
DOD Overseas	100.0	0.8	10.1	21.6	7.8	59.6
DOD Domestic	100.0	0.7	3.5	26.0	18.4	51.4
American Samoa	100.0	0.0	100.0	0.0	0.0	0.0
Guam	100.0	0.1	97.7	0.3	0.2	1.7
Northern Marianas	100.0	0.0	99.7	0.0	0.0	0.3
Puerto Rico <sup>2</sup>	100.0	0.0	0.0	0.0	100.0	0.0
Virgin Islands	100.0	0.1	0.2	85.8	13.1	0.8

— Data missing.

<sup>1</sup>Total excludes students for whom race/ethnicity was not reported.

<sup>2</sup>Puerto Rico and the BIA reported all of their students in one race/ethnicity.

NOTE: Percents may not add to 100 due to rounding.

SOURCE: U.S. Department of Education, National Center for Education Statistics, Common Core of Data, "State Nonfiscal Survey of Public Elementary/Secondary Education," 2000–01.

**Table 6.—Number of public high school completers, by state: School year 1999–2000**

State	Total high school completers	Diploma recipients	Other high school completers	High school equivalency recipients <sup>2</sup>
<b>United States</b>	<b>—</b>	<b>2,546,102</b>	<b><sup>1</sup>41,638</b>	<b>—</b>
Alabama	43,459	37,819	2,535	3,105
Alaska	7,968	6,615	53	1,300
Arizona	—	38,304	375	—
Arkansas	36,616	27,335	2,176	7,105
California	328,490	309,866	(†)	18,624
Colorado	42,501	38,924	140	3,437
Connecticut	33,086	31,562	33	1,491
Delaware	6,469	6,108	78	283
District of Columbia	—	2,695	221	—
Florida	124,285	106,708	3,997	13,580
Georgia	—	62,563	5,334	—
Hawaii	—	10,437	229	—
Idaho	—	16,170	37	—
Illinois	—	111,835	(†)	—
Indiana	—	57,023	1,896	—
Iowa	36,447	33,926	124	2,397
Kansas	—	29,102	(†)	—
Kentucky	43,430	36,830	339	6,261
Louisiana	43,817	38,430	960	4,427
Maine	12,674	12,148	97	429
Maryland	50,991	47,849	461	2,681
Massachusetts	—	52,950	(†)	—
Michigan	91,246	89,986	459	801
Minnesota	60,257	57,372	(†)	2,885
Mississippi	26,756	24,232	2,092	432
Missouri	58,050	52,848	99	5,103
Montana	12,250	10,903	(†)	1,347
Nebraska	—	20,149	172	—
Nevada	17,444	14,551	839	2,054
New Hampshire	—	11,829	—	915
New Jersey	—	74,423	—	—
New Mexico	20,883	18,031	541	2,311
New York	166,293	141,731	5,553	19,009
North Carolina	69,872	62,140	704	7,028
North Dakota	10,452	8,606	(†)	1,846
Ohio	120,541	111,668	(†)	8,873
Oklahoma	45,742	37,646	(†)	8,096
Oregon	—	30,151	3,282	—
Pennsylvania	123,031	113,959	(†)	9,072
Rhode Island	9,216	8,477	18	721
South Carolina	—	31,617	2,301	—
South Dakota	—	9,278	(†)	—
Tennessee	—	41,568	4,257	—
Texas	214,880	212,925	(†)	1,955
Utah	35,540	32,501	312	2,727
Vermont	6,714	6,675	23	16
Virginia	72,420	65,596	1,862	4,962
Washington	—	57,597	—	5,235
West Virginia	20,587	19,437	12	1,138
Wisconsin	—	58,545	—	8,377
Wyoming	—	6,462	27	—
.....				
Outlying Areas, DoD Dependents Schools, and Bureau of Indian Affairs				
Bureau of Indian Affairs	—	—	—	—
DOD Overseas	—	2,642	0	—
DOD Domestic	—	560	—	—
American Samoa	—	698	3	2
Guam	—	1,406	—	—
Northern Marianas	—	360	—	—
Puerto Rico	—	30,856	—	12,917
Virgin Islands	—	1,060	—	—

— Data missing.

† Not applicable.

<sup>1</sup>Total other high school completers does not include New Hampshire, New Jersey, Washington, and Wisconsin.<sup>2</sup>Includes recipients age 19 or younger, except in Minnesota, where they are age 20 or younger.

NOTE: High school completer categories may include students not included in 12th-grade membership.

SOURCE: U.S. Department of Education, National Center for Education Statistics, Common Core of Data, "State Nonfiscal Survey of Public Elementary/Secondary Education," 2000–01.

**Table 7.—Public diploma recipients, by race/ethnicity and state: School year 1999–2000**

State	Total reported*	American		Black	White	
		Indian/Alaska Native	Asian/Pacific Islander	non-Hispanic	Hispanic	non-Hispanic
Alabama	37,798	465	363	12,562	223	24,185
Alaska	6,615	1,257	347	245	190	4,576
Arizona	—	—	—	—	—	—
Arkansas	27,335	123	315	5,782	508	20,607
California	308,905	2,655	45,499	22,536	100,637	137,578
Colorado	38,924	321	1,288	1,693	5,172	30,450
Connecticut	31,562	84	920	3,511	2,739	24,308
Delaware	6,107	11	168	1,510	181	4,237
District of Columbia	2,695	1	63	2,333	200	98
Florida	106,708	236	3,067	22,595	16,092	64,718
Georgia	62,563	89	1,709	20,180	1,085	39,500
Hawaii	10,437	27	7,841	172	491	1,906
Idaho	16,168	130	234	64	948	14,792
Illinois	111,835	206	4,750	16,416	10,873	79,590
Indiana	57,023	68	626	4,328	1,186	50,815
Iowa	33,926	74	547	734	537	32,034
Kansas	29,102	275	681	1,766	1,205	25,175
Kentucky	36,830	555	239	2,902	197	32,937
Louisiana	38,430	210	659	14,831	503	22,227
Maine	12,148	58	128	90	63	11,809
Maryland	47,849	120	2,566	15,252	1,489	28,422
Massachusetts	52,950	111	2,322	4,030	3,505	42,982
Michigan	89,986	841	1,894	5,718	1,890	79,643
Minnesota	57,372	629	2,280	1,683	885	51,895
Mississippi	24,232	22	152	11,322	55	12,681
Missouri	52,848	124	829	6,683	643	44,569
Montana	10,903	681	82	23	134	9,983
Nebraska	20,149	126	327	808	673	18,215
Nevada	14,551	204	920	1,265	1,863	10,299
New Hampshire	—	—	—	—	—	—
New Jersey	74,423	207	5,198	11,102	8,607	49,309
New Mexico	18,031	1,858	207	416	7,591	7,959
New York	141,731	438	9,859	20,798	15,853	94,783
North Carolina	62,140	729	1,313	16,592	1,061	42,445
North Dakota	8,606	388	52	58	68	8,040
Ohio	111,668	102	1,444	11,253	656	98,213
Oklahoma	37,646	5,646	657	3,132	1,260	26,951
Oregon	29,782	448	1,340	519	1,595	25,880
Pennsylvania	113,959	67	2,395	11,713	2,825	96,959
Rhode Island	8,477	14	292	464	708	6,999
South Carolina	—	—	—	—	—	—
South Dakota	9,278	326	76	60	69	8,747
Tennessee	—	—	—	—	—	—
Texas	212,925	521	6,862	27,507	68,314	109,721
Utah	32,501	328	731	168	1,349	29,925
Vermont	—	—	—	—	—	—
Virginia	65,596	163	3,070	15,042	2,039	45,282
Washington	—	—	—	—	—	—
West Virginia	19,437	23	134	678	73	18,529
Wisconsin	58,545	532	1,520	2,573	1,446	52,474
Wyoming	6,462	85	49	29	353	5,946
Outlying Areas, DoD Dependents Schools, and Bureau of Indian Affairs						
Bureau of Indian Affairs	—	—	—	—	—	—
DOD Overseas	2,362	0	387	434	204	1,337
DOD Domestic	518	0	31	101	171	215
American Samoa	698	0	698	0	0	0
Guam	1,404	0	1,354	2	8	40
Northern Marianas	360	0	351	0	0	9
Puerto Rico	30,856	0	0	0	30,856	0
Virgin Islands	1,060	0	0	969	81	10

— Data missing.

\* Total excludes students for whom race/ethnicity was not reported.

SOURCE: U.S. Department of Education, National Center for Education Statistics, Common Core of Data, "State Nonfiscal Survey of Public Elementary/Secondary Education," 2000–01.

**Table 8.—Other public high school completers, by race/ethnicity and state: School year 1999–2000**

State	Total reported*	American		Black	Hispanic	White
		Indian/Alaska Native	Asian/Pacific Islander	non-Hispanic		non-Hispanic
Alabama	2,534	48	20	1,298	25	1,143
Alaska	53	14	8	0	2	29
Arizona	—	—	—	—	—	—
Arkansas	2,176	10	8	604	20	1,534
California	(†)	(†)	(†)	(†)	(†)	(†)
Colorado	140	0	5	4	19	112
Connecticut	(†)	(†)	(†)	(†)	(†)	(†)
Delaware	—	—	—	—	—	—
District of Columbia	221	0	0	216	1	4
Florida	3,997	10	81	1,910	983	1,013
Georgia	5,334	9	121	3,407	162	1,635
Hawaii	229	1	160	5	22	41
Idaho	37	0	0	1	3	33
Illinois	(†)	(†)	(†)	(†)	(†)	(†)
Indiana	1,896	2	39	349	106	1,400
Iowa	124	0	5	3	2	114
Kansas	(†)	(†)	(†)	(†)	(†)	(†)
Kentucky	—	—	—	—	—	—
Louisiana	960	6	4	647	7	296
Maine	97	0	1	1	5	90
Maryland	461	2	15	213	19	212
Massachusetts	(†)	(†)	(†)	(†)	(†)	(†)
Michigan	459	7	10	160	23	259
Minnesota	(†)	(†)	(†)	(†)	(†)	(†)
Mississippi	1,660	1	1	1,199	0	459
Missouri	—	—	—	—	—	—
Montana	(†)	(†)	(†)	(†)	(†)	(†)
Nebraska	172	6	2	14	17	133
Nevada	839	12	70	241	262	254
New Hampshire	—	—	—	—	—	—
New Jersey	—	—	—	—	—	—
New Mexico	541	105	4	12	273	147
New York	5,553	27	700	675	1,099	3,052
North Carolina	—	—	—	—	—	—
North Dakota	(†)	(†)	(†)	(†)	(†)	(†)
Ohio	(†)	(†)	(†)	(†)	(†)	(†)
Oklahoma	(†)	(†)	(†)	(†)	(†)	(†)
Oregon	3,255	71	143	110	306	2,625
Pennsylvania	(†)	(†)	(†)	(†)	(†)	(†)
Rhode Island	18	2	0	2	0	14
South Carolina	—	—	—	—	—	—
South Dakota	(†)	(†)	(†)	(†)	(†)	(†)
Tennessee	—	—	—	—	—	—
Texas	(†)	(†)	(†)	(†)	(†)	(†)
Utah	312	3	20	2	41	246
Vermont	—	—	—	—	—	—
Virginia	1,862	0	43	513	55	1,251
Washington	—	—	—	—	—	—
West Virginia	12	0	0	0	0	12
Wisconsin	—	—	—	—	—	—
Wyoming	27	5	2	1	2	17
Outlying Areas, DoD Dependents Schools, and Bureau of Indian Affairs						
Bureau of Indian Affairs	—	—	—	—	—	—
DOD Overseas	—	—	—	—	—	—
DOD Domestic	—	—	—	—	—	—
American Samoa	3	0	3	0	0	0
Guam	—	—	—	—	—	—
Northern Marianas	—	—	—	—	—	—
Puerto Rico	—	—	—	—	—	—
Virgin Islands	—	—	—	—	—	—

— Data missing.

† Not applicable.

\* Total excludes students for whom race/ethnicity was not reported.

SOURCE: U.S. Department of Education, National Center for Education Statistics, Common Core of Data, "State Nonfiscal Survey of Public Elementary/Secondary Education," 2000–01.

**Table 9.—High school equivalencies, by race/ethnicity and state: School year 1999–2000**

State	Total reported*	American Indian/Alaska Native	Asian/Pacific Islander	Black non-Hispanic	Hispanic	White non-Hispanic
Alabama	—	—	—	—	—	—
Alaska	1,300	237	36	43	38	946
Arizona	—	—	—	—	—	—
Arkansas	6,774	116	6	959	288	5,405
California	—	—	—	—	—	—
Colorado	3,437	81	77	212	705	2,362
Connecticut	1,491	16	19	235	206	1,015
Delaware	—	—	—	—	—	—
District of Columbia	—	—	—	—	—	—
Florida	13,580	98	170	1,213	2,020	10,079
Georgia	—	—	—	—	—	—
Hawaii	—	—	—	—	—	—
Idaho	—	—	—	—	—	—
Illinois	—	—	—	—	—	—
Indiana	—	—	—	—	—	—
Iowa	2,397	49	31	268	151	1,898
Kansas	—	—	—	—	—	—
Kentucky	6,261	110	28	1,409	226	4,488
Louisiana	4,427	89	43	775	185	3,335
Maine	429	1	3	7	6	412
Maryland	—	—	—	—	—	—
Massachusetts	—	—	—	—	—	—
Michigan	801	6	14	83	41	657
Minnesota	—	—	—	—	—	—
Mississippi	432	—	1	138	—	293
Missouri	—	—	—	—	—	—
Montana	1,347	172	5	6	60	1,104
Nebraska	—	—	—	—	—	—
Nevada	1,970	67	71	157	361	1,314
New Hampshire	—	—	—	—	—	—
New Jersey	—	—	—	—	—	—
New Mexico	—	—	—	—	—	—
New York	—	—	—	—	—	—
North Carolina	7,028	116	73	1,409	194	5,236
North Dakota	1,846	602	9	28	64	1,143
Ohio	—	—	—	—	—	—
Oklahoma	7,834	1,042	59	784	487	5,462
Oregon	—	—	—	—	—	—
Pennsylvania	—	—	—	—	—	—
Rhode Island	—	—	—	—	—	—
South Carolina	—	—	—	—	—	—
South Dakota	—	—	—	—	—	—
Tennessee	—	—	—	—	—	—
Texas	1,955	4	32	278	695	946
Utah	2,727	101	66	87	319	2,154
Vermont	—	—	—	—	—	—
Virginia	4,962	26	90	905	278	3,663
Washington	—	—	—	—	—	—
West Virginia	—	—	—	—	—	—
Wisconsin	—	—	—	—	—	—
Wyoming	—	—	—	—	—	—
.....						
Outlying Areas, DoD Dependents Schools, and Bureau of Indian Affairs						
Bureau of Indian Affairs	—	—	—	—	—	—
DOD Overseas	—	—	—	—	—	—
DOD Domestic	—	—	—	—	—	—
American Samoa	2	0	2	0	0	0
Guam	—	—	—	—	—	—
Northern Marianas	—	—	—	—	—	—
Puerto Rico	12,917	0	0	0	12,917	0
Virgin Islands	—	—	—	—	—	—

— Data missing.

\* Total excludes students for whom race/ethnicity was not reported.

SOURCE: U.S. Department of Education, National Center for Education Statistics, Common Core of Data, "State Nonfiscal Survey of Public Elementary/Secondary Education," 2000–01.

**Table 10.— Public school student membership and total teachers, by state: School years 1990–91 and 2000–01**

State	Total student membership			Total teachers		
	1990-91	2000-01	Percent change from 1990-1991 to 2000–01	1990-91	2000-01	Percent change from 1990-1991 to 2000–01
<b>United States</b>	<b>41,216,683</b>	<b>47,222,778</b>	<b>14.6</b>	<b>2,398,169</b>	<b>2,952,991</b>	<b>23.1</b>
Alabama	721,806	740,176	2.5	36,266	48,199	32.9
Alaska	113,903	133,356	17.1	6,710	7,880	17.4
Arizona	639,853	877,696	37.2	32,987	44,438	34.7
Arkansas	436,286	449,959	3.1	25,984	31,947	22.9
California	4,950,474	6,142,348	24.1	217,228	298,064	37.2
Colorado	574,213	724,508	26.2	32,342	41,983	29.8
Connecticut	469,123	562,179	19.8	34,785	41,044	18.0
Delaware	99,658	114,676	15.1	5,961	7,471	25.3
District of Columbia	80,694	68,925	-14.6	5,950	4,949	-16.8
Florida	1,861,592	2,434,821	30.8	108,088	132,030	22.2
Georgia	1,151,687	1,444,937	25.5	63,058	91,044	44.4
Hawaii	171,708	184,360	7.4	9,083	10,927	20.3
Idaho	220,840	245,117	11.0	11,254	13,714	21.9
Illinois	1,821,407	2,048,792	12.5	108,775	127,620	17.3
Indiana	954,525	989,225	3.6	54,806	59,226	8.1
Iowa	483,652	495,080	2.4	31,045	34,636	11.6
Kansas	437,034	470,610	7.7	29,140	32,742	12.4
Kentucky	636,401	665,850	4.6	36,777	39,589	7.6
Louisiana	784,757	743,089	-5.3	45,401	49,916	9.9
Maine	215,149	207,037	-3.8	15,513	16,559	6.7
Maryland	715,176	852,920	19.3	42,562	52,433	23.2
Massachusetts	834,314	975,150	16.9	54,003	67,432	24.9
Michigan	1,584,431	1,743,337	10.0	80,008	97,031	21.3
Minnesota	756,374	854,340	13.0	43,574	53,457	22.7
Mississippi	502,417	497,871	-0.9	28,062	31,006	10.5
Missouri	816,558	912,744	11.8	52,359	64,739	23.6
Montana	152,974	154,875	1.2	9,613	10,411	8.3
Nebraska	274,081	286,199	4.4	18,764	20,983	11.8
Nevada	201,316	340,706	69.2	10,373	18,294	76.4
New Hampshire	172,785	208,461	20.6	10,637	14,341	34.8
New Jersey	1,089,646	1,307,828	20.0	79,886	99,718	24.8
New Mexico	301,881	320,306	6.1	16,703	21,043	26.0
New York	2,598,337	2,882,188	10.9	176,390	206,961	17.3
North Carolina	1,086,871	1,293,638	19.0	64,283	83,680	30.2
North Dakota	117,825	109,201	-7.3	7,591	8,141	7.2
Ohio	1,771,089	1,835,049	3.6	103,088	118,361	14.8
Oklahoma	579,087	623,110	7.6	37,221	41,318	11.0
Oregon	472,394	546,231	15.6	26,174	28,094	7.3
Pennsylvania	1,667,834	1,814,311	8.8	100,275	116,963	16.6
Rhode Island	138,813	157,347	13.4	9,522	10,646	11.8
South Carolina	622,112	677,411	8.9	36,963	45,380	22.8
South Dakota	129,164	128,603	-0.4	8,511	9,397	10.4
Tennessee	824,595	909,388	10.3	43,051	61,233	42.2
Texas	3,382,887	4,059,619	20.0	219,298	274,826	25.3
Utah	446,652	481,687	7.8	17,884	22,008	23.1
Vermont	95,762	102,049	6.6	7,257	8,414	15.9
Virginia	998,601	1,144,915	14.7	63,638	91,560	43.9
Washington	839,709	1,004,770	19.7	41,764	51,098	22.3
West Virginia	322,389	286,367	-11.2	21,476	20,930	-2.5
Wisconsin	797,621	879,476	10.3	49,302	62,332	26.4
Wyoming	98,226	89,940	-8.4	6,784	6,783	0.0
Outlying Areas, DoD Dependents Schools, and Bureau of Indian Affairs						
Bureau of Indian Affairs	—	46,938	—	—	—	—
DOD Overseas	—	73,581	—	—	5,105	—
DOD Domestic	—	34,174	—	—	2,399	—
American Samoa	12,463	15,702	26.0	662	820	23.9
Guam	26,391	32,473	23.0	1,543	1,975	28.0
Northern Marianas	6,449	10,004	55.1	416	526	26.4
Puerto Rico	644,734	612,725	-5.0	34,260	37,620	9.8
Virgin Islands	21,750	19,459	-10.5	1,575	1,511	-4.1

— Data missing.

NOTE: Teacher counts are full-time-equivalency (FTE) counts.

SOURCE: U.S. Department of Education, National Center for Education Statistics, Common Core of Data, "State Nonfiscal Survey of Public Elementary/Secondary Education," 1990–91 and 2000–01.