



# STATEWIDE LONGITUDINAL DATA SYSTEMS GRANT PROGRAM

Supporting State Collection and Use of Longitudinal Data to Improve Student Outcomes



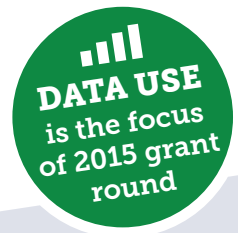
## BETTER DECISIONS REQUIRE BETTER INFORMATION.

This principle lies at the heart of the Statewide Longitudinal Data Systems (SLDS) Grant Program. Through **grants and a wide range of services and resources**, the SLDS program has helped propel the successful design, development, implementation, expansion, and use of K12 and P-20W (early learning through the workforce) longitudinal data systems. These systems increase States' capacity to efficiently and accurately manage, analyze, and use education, social service, workforce, and other statewide data. SLDSs help policy makers, program administrators, educators, and other stakeholders make data-informed decisions to take actions which **improve student outcomes**, and **facilitate research to improve policies and service provision**.

### Why Do SLDSs Matter?

- Promote **workforce and economic development** by informing the alignment of education pathways and employment opportunities
- Enable research and program evaluation to **inform State policymaking and resource allocation**
- Provide a holistic view of classrooms and students to **support and enrich teaching and learning**
- Improve **government efficiency** by identifying redundancies and automating processes

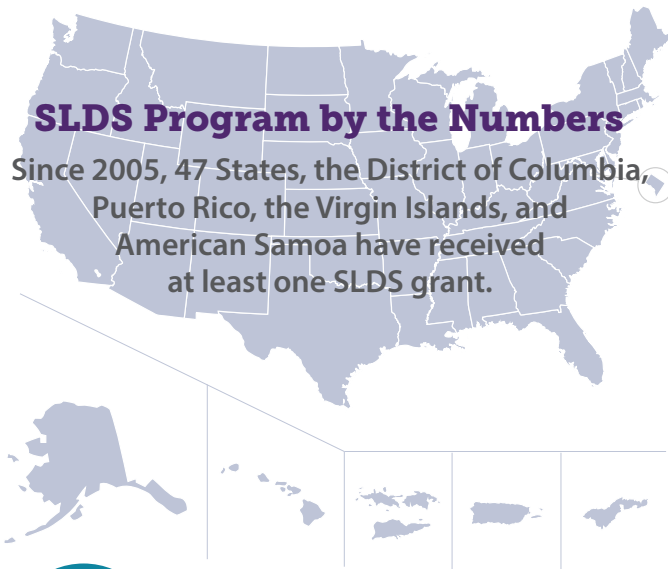
**Background:** Authorized by the Educational Technical Assistance Act of 2002, Title II of the statute that created the Institute of Education Sciences, the SLDS Grant Program has awarded competitive, cooperative agreement grants to States since 2005. Grants extend 3 to 5 years and require grantees to submit annual reports and a final report on the development and implementation of their systems. All 50 States, 5 Territories, and the District of Columbia are eligible to apply.



Learn more about the SLDS Program at <http://nces.ed.gov/programs/slids>.

## SLDS Program by the Numbers

Since 2005, 47 States, the District of Columbia, Puerto Rico, the Virgin Islands, and American Samoa have received at least one SLDS grant.



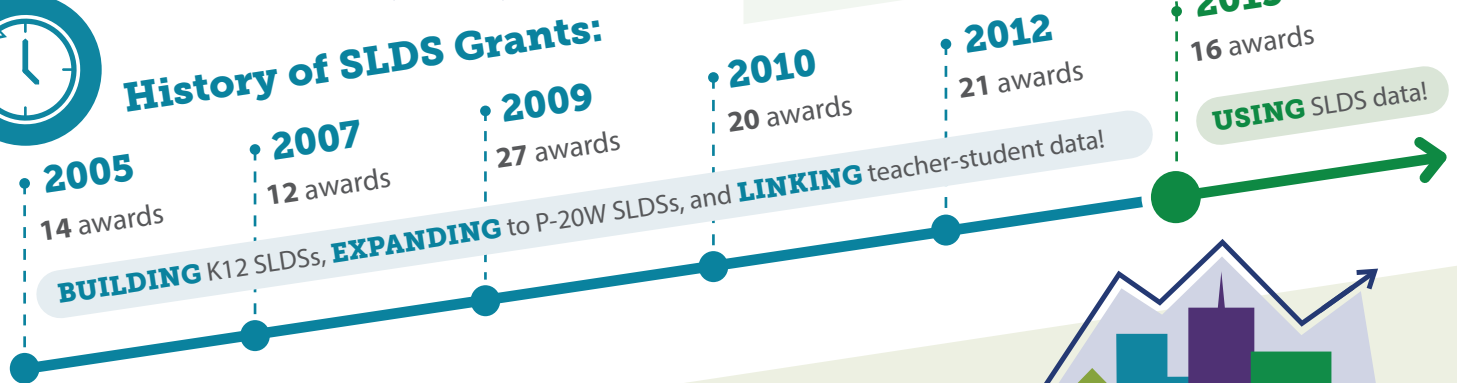
## Putting the Data to Use!

Building upon the prior grant rounds' focus on establishing these complex state systems, the FY15 grants focus on the use of data in six Priority Areas:

1. College and Career
2. Instructional Support
3. Evaluation and Research
4. Early Learning
5. Financial Equity & Return on Investment
6. Educator Talent Management



## History of SLDS Grants:

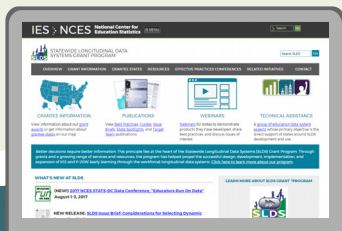


## Supporting (Not Just Funding) SLDS Work

**What is the SLDS State Support Team?** In addition to grants, the SLDS Program provides technical assistance to help ensure States and Territories are successful in their data system and data use efforts. The SLDS State Support Team (SST), a group of experienced State data systems experts, provide a range of support in the development and use of SLDSs.

**What Support Do They Offer?** Funded by the SLDS Program, SST support is free of charge and available to all States/Territories, regardless of grant status. The SST hosts and facilitates technical assistance calls, webinars, workgroups, workshops, and on-site visits. They also produce **publicly available** best practice briefs and templates to capture and disseminate effective practices. Areas of SST assistance include, but are not limited to, data governance, stakeholder engagement, data use, project management, and sustainability. The types of support provided by the SST are based on States' needs and evolve in response to the current challenges in the field. SST efforts are coordinated with those of other related TA centers to increase efficiency and leverage complementary services and expertise.

**Get in Contact.** Each State/Territory has an **SST Point of Contact** (or email [support@sst-slds.org](mailto:support@sst-slds.org)). Find yours!



**Learn More!** Visit the SLDS Grant Program website at <https://nces.ed.gov/programs/SLDS>, for more information, or contact the State Support Team at [support@sst-slds.org](mailto:support@sst-slds.org) for assistance.