



# SLDS STAFF: PROGRAM OFFICERS & PROGRAM ANALYSTS (POs & PAs)

Who They Are, What They Do, & How They Can Help

The **Statewide Longitudinal Data Systems (SLDS) Grant Program** is dedicated to promoting its grantees' successful development of data systems that increase their capacity to efficiently and accurately manage, analyze, and use education, social service, workforce, and other statewide data. To achieve this goal, SLDS Program Officers (POs) and Program Analysts (PAs) go beyond grant monitoring to support states and territories and coordinate efforts with related organizations. This document introduces these SLDS staff and the work they do.

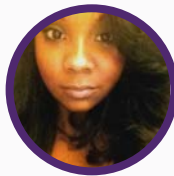
## PROGRAM OFFICERS



Nancy Sharkey



Charles McGrew



Kristen King

## PROGRAM ANALYSTS



Amanda Musick



Leanne Taylor

**Program Officers** monitor grantees' progress toward meeting project and SLDS Program goals. They do this by monitoring cooperative agreements to track grantee progress, financial drawdowns, and technical assistance (TA) needs. PO responsibilities include

- **reviewing progress** with grantee personnel;
- **initiating responses to TA requests and coordinating** with Department of Education staff, TA consultants, other states, and other TA providers to meet those requests;
- **recording solutions and outcomes to TA requests** and integrating them into a broader training or assistance agenda; and
- **conducting site visits** to states and territories to review progress and identify strengths and weaknesses in grantees' efforts to meet project goals.

**Program Analysts** help POs to ensure that grantees achieve project goals and receive needed TA. They coordinate among grantees, POs, and the State Support Team (SST). PA responsibilities include

- **assisting with monitoring and supporting** grantees through regular update calls and documentation of grantees' progress and issues;
- **assisting with submission and review of documents** such as grantees' annual and final grant reports and other required documentation;
- **analyzing data** to identify project risks and TA needs;
- **planning and participating in site visits** and drafting site visit reports; and
- **assisting SST** with TA activities.



# Program Officer & Program Analyst Points of Contact (PoCs) Index

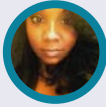
## POs



Nancy Sharkey



Charles McGrew



Kristen King

## PAs



Amanda Musick



Leanne Taylor

State/Territory	PO and PA PoCs
Alabama	McGrew ●
Alaska	Sharkey ●
American Samoa	Sharkey ● Musick ●
Arizona	King ●
Arkansas	McGrew ●
California	Sharkey ●
Colorado	McGrew ●
Connecticut	Sharkey ●
Delaware	King ●
District of Columbia	McGrew ● Musick ●
Florida	McGrew ●
Georgia	Sharkey ●
Guam	Sharkey ●
Hawaii	Sharkey ● Taylor ●
Idaho	McGrew ● Taylor ●
Illinois	McGrew ● Musick ●
Indiana	McGrew ● Taylor ●
Iowa	King ●
Kansas	McGrew ●
Kentucky	King ● Taylor ●
Louisiana	Sharkey ●
Maine	McGrew ●
Maryland	King ● Musick ●
Massachusetts	King ● Musick ●
Michigan	McGrew ●
Minnesota	Sharkey ● Taylor ●
Mississippi	McGrew ● Taylor ●
Missouri	McGrew ●

State/Territory	PO and PA PoCs
Montana	McGrew ● Musick ●
Nebraska	McGrew ●
Nevada	King ● Taylor ●
New Hampshire	King ● Taylor ●
New Jersey	McGrew ● Taylor ●
New Mexico	Sharkey ●
New York	Sharkey ●
North Carolina	McGrew ●
North Dakota	McGrew ● Musick ●
No. Mariana Isl. (CNMI)	Sharkey ●
Ohio	McGrew ●
Oklahoma	Sharkey ●
Oregon	McGrew ●
Pennsylvania	King ● Musick ●
Puerto Rico	King ● Taylor ●
Rhode Island	King ● Musick ●
South Carolina	Sharkey ●
South Dakota	McGrew ●
Tennessee	Sharkey ● Taylor ●
Texas	McGrew ● Taylor ●
U.S. Virgin Islands	McGrew ● Taylor ●
Utah	McGrew ● Taylor ●
Vermont	Sharkey ● Musick ●
Virginia	Sharkey ●
Washington	King ● Taylor ●
West Virginia	King ●
Wisconsin	McGrew ● Musick ●
Wyoming	Sharkey ●



**Get SLDS Support Now!** Visit the SLDS Grant Program website at <https://nces.ed.gov/programs/SLDS> for more information, or contact a PO or PA for assistance.