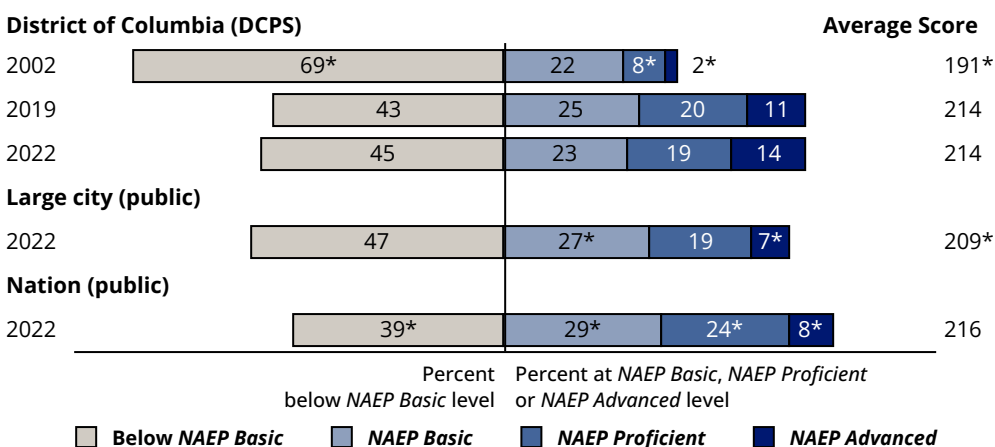


OVERALL RESULTS

- In 2022, the average score of fourth-grade students in District of Columbia was 214. This was higher than the average score of 209 for students in large cities.
- The average score for students in District of Columbia in 2022 (214) was not significantly different from their average score in 2019 (214) and was higher than their average score in 2002 (191).
- The percentage of students in District of Columbia who performed at or above the *NAEP Proficient* level was 32 percent in 2022. This percentage was not significantly different from that in 2019 (32 percent) and was greater than that in 2002 (10 percent).
- The percentage of students in District of Columbia who performed at or above the *NAEP Basic* level was 55 percent in 2022. This percentage was not significantly different from that in 2019 (57 percent) and was greater than that in 2002 (31 percent).

NAEP ACHIEVEMENT-LEVEL PERCENTAGES AND AVERAGE SCORE RESULTS



* Significantly different ($p < .05$) from the district's results in 2022. Significance tests were performed using unrounded numbers.

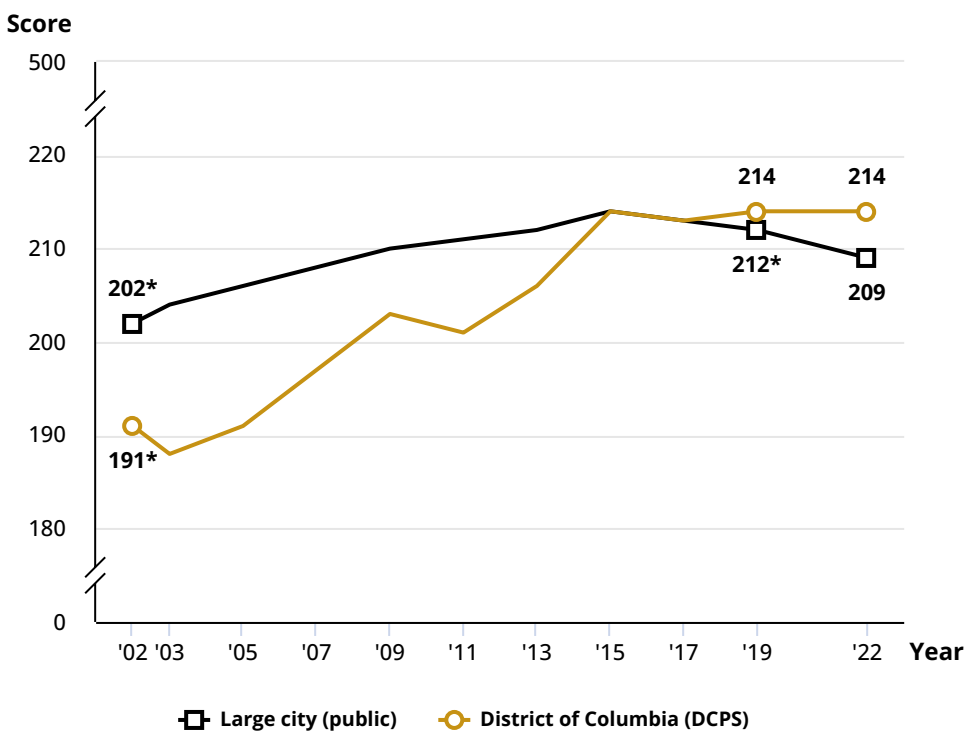
NOTE: NAEP achievement levels are to be used on a trial basis and should be interpreted and used with caution. Detail may not sum to totals because of rounding.

COMPARE THE AVERAGE SCORE IN 2022 TO OTHER DISTRICTS

In 2022, the average score in District of Columbia (DCPS) (214) was

Lower Than 4 Districts	Not Significantly Different From 7 Districts	Higher Than 14 Districts
Austin Hillsborough County Miami-Dade San Diego	Boston Charlotte Denver Duval County Guilford County Jefferson County New York City	Albuquerque Atlanta Baltimore City Chicago Clark County Cleveland Dallas Detroit Fort Worth Houston Los Angeles Milwaukee Philadelphia Shelby County

AVERAGE SCORES FOR DISTRICT AND LARGE CITIES



* Significantly different ($p < .05$) from 2022. Significance tests were performed using unrounded numbers.

RESULTS FOR STUDENT GROUPS IN 2022

REPORTING GROUPS	PERCENTAGE OF STUDENTS	AVG. SCORE	PERCENTAGE AT OR ABOVE NAEP		PERCENTAGE AT NAEP ADVANCED
			BASIC	PROFICIENT	
Race/Ethnicity					
White	18	266	97	85	48
Black	54	197	42	16	3
Hispanic	22	204	46	22	7
Asian	2	‡	‡	‡	‡
American Indian/Alaska Native	#	‡	‡	‡	‡
Native Hawaiian/Pacific Islander	#	‡	‡	‡	‡
Two or More Races	3	‡	‡	‡	‡
Gender					
Male	49	210	53	30	13
Female	51	217	58	35	15
National School Lunch Program					
Eligible	73	199	42	18	5
Not eligible	27	254	90	72	37

Rounds to zero.

‡ Reporting standards not met.

NOTE: Detail may not sum to totals because of rounding, and because the "Information not available" category for the National School Lunch Program, which provides free/reduced-price lunches, is not displayed. Black includes African American and Hispanic includes Latino. Race categories exclude Hispanic origin.

SCORE GAPS FOR STUDENT GROUPS

- In 2022, Black students had an average score that was 69 points lower than that for White students. This performance gap was not significantly different from that in 2002 (60 points).
- In 2022, Hispanic students had an average score that was 62 points lower than that for White students. This performance gap was not significantly different from that in 2002 (55 points).
- In 2022, male students in District of Columbia had an average score that was lower than that for female students by 7 points.
- In 2022, students who were eligible for the National School Lunch Program (NSLP) had an average score that was 56 points lower than that for students who were not eligible. This performance gap was wider than that in 2002 (25 points).