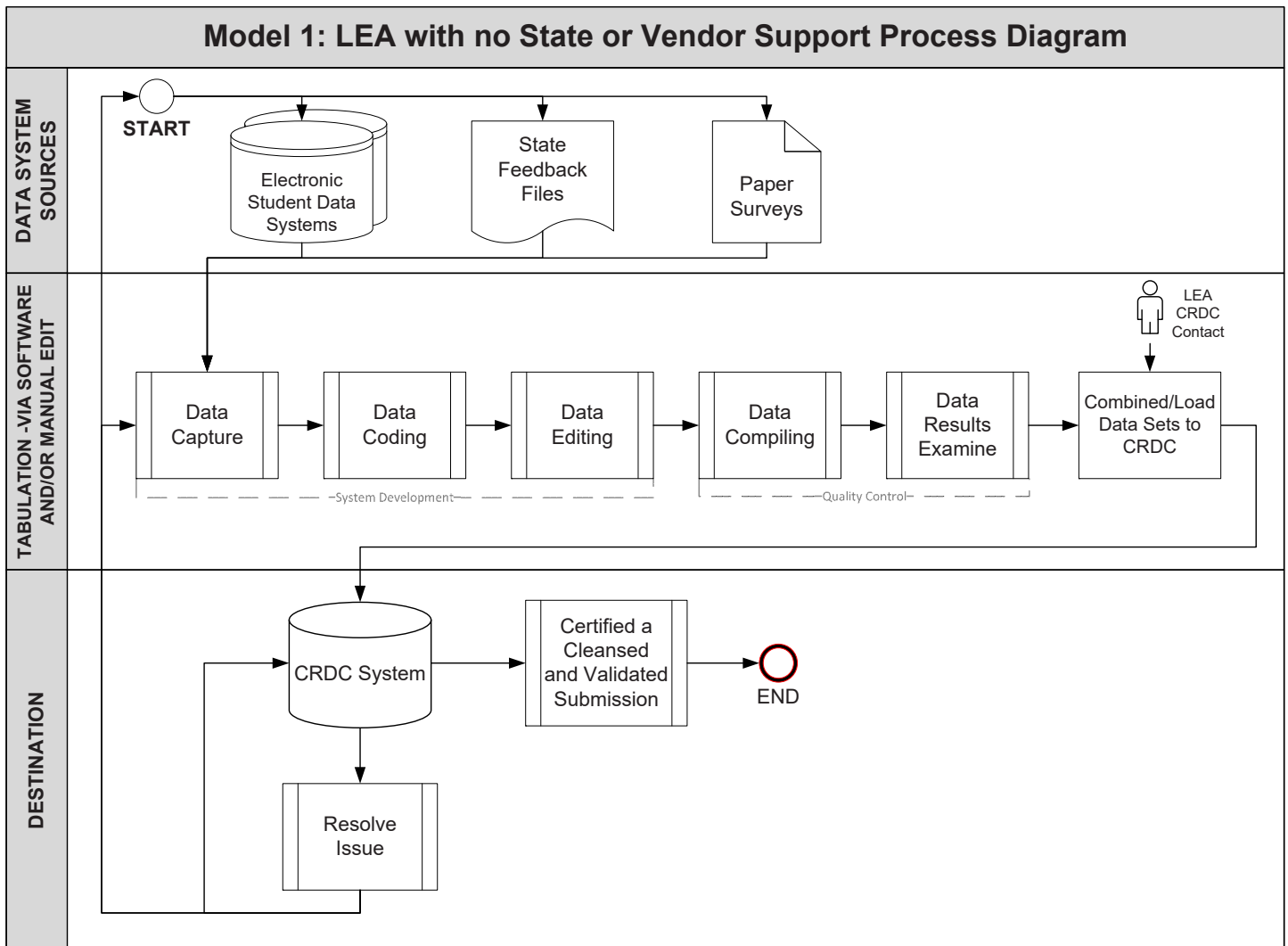


The four process diagrams in this document visually depict the reporting process for the Civil Rights Data Collection. The first diagram shows the reporting process for a local education agency (LEA) that does not receive assistance from either a vendor or the state education agency (SEA). The second diagram shows the reporting process for an LEA that receives assistance from a vendor. The third diagram shows the reporting process for an LEA that receives data files from the SEA that can be used for CRDC reporting. The fourth diagram shows the reporting process for an LEA for which the SEA prepopulates data in the CRDC Online Submission System.

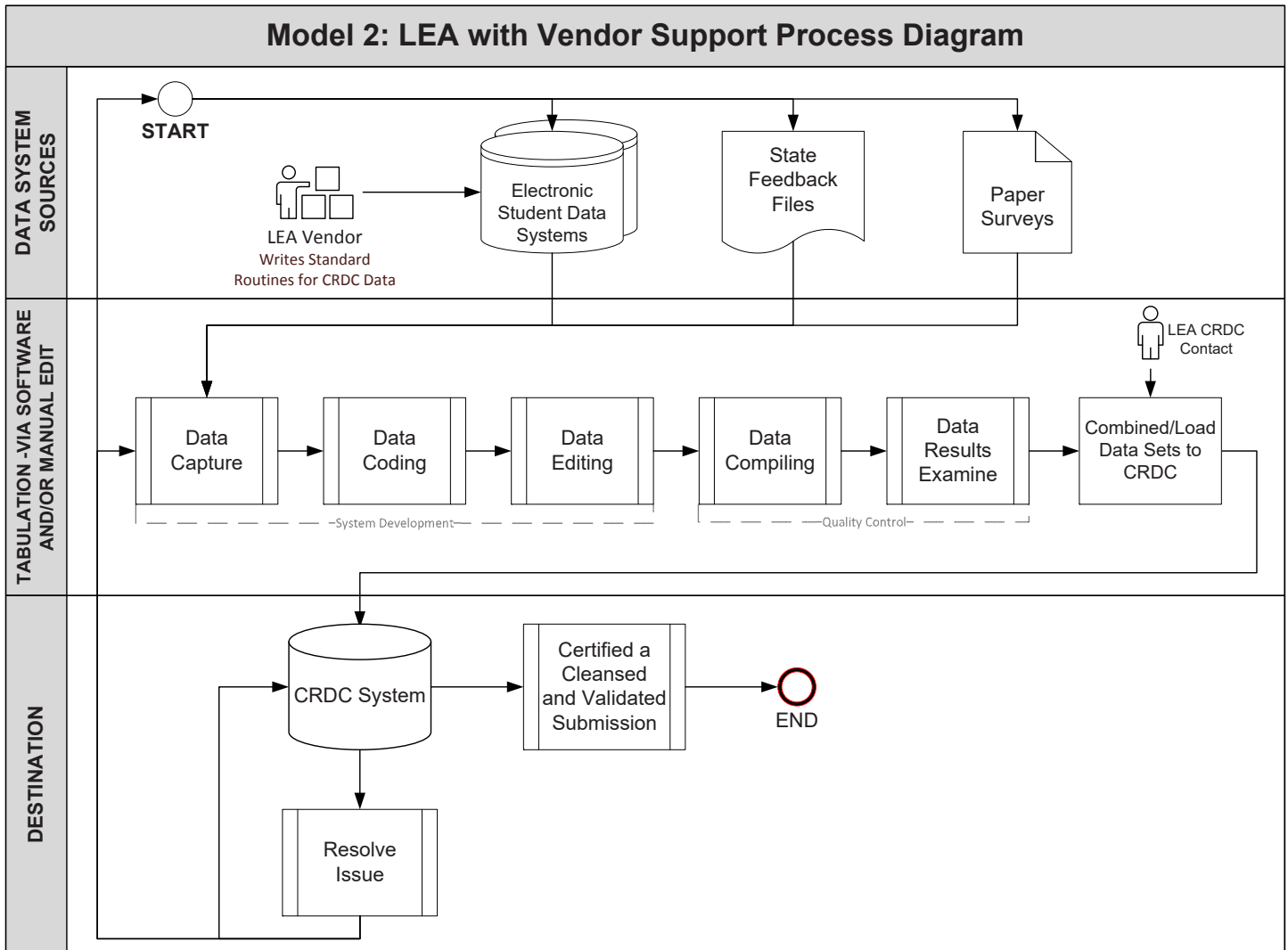
LEA with No Support

The diagram below shows the CRDC reporting process for an LEA that receives no support from a vendor or from the SEA.



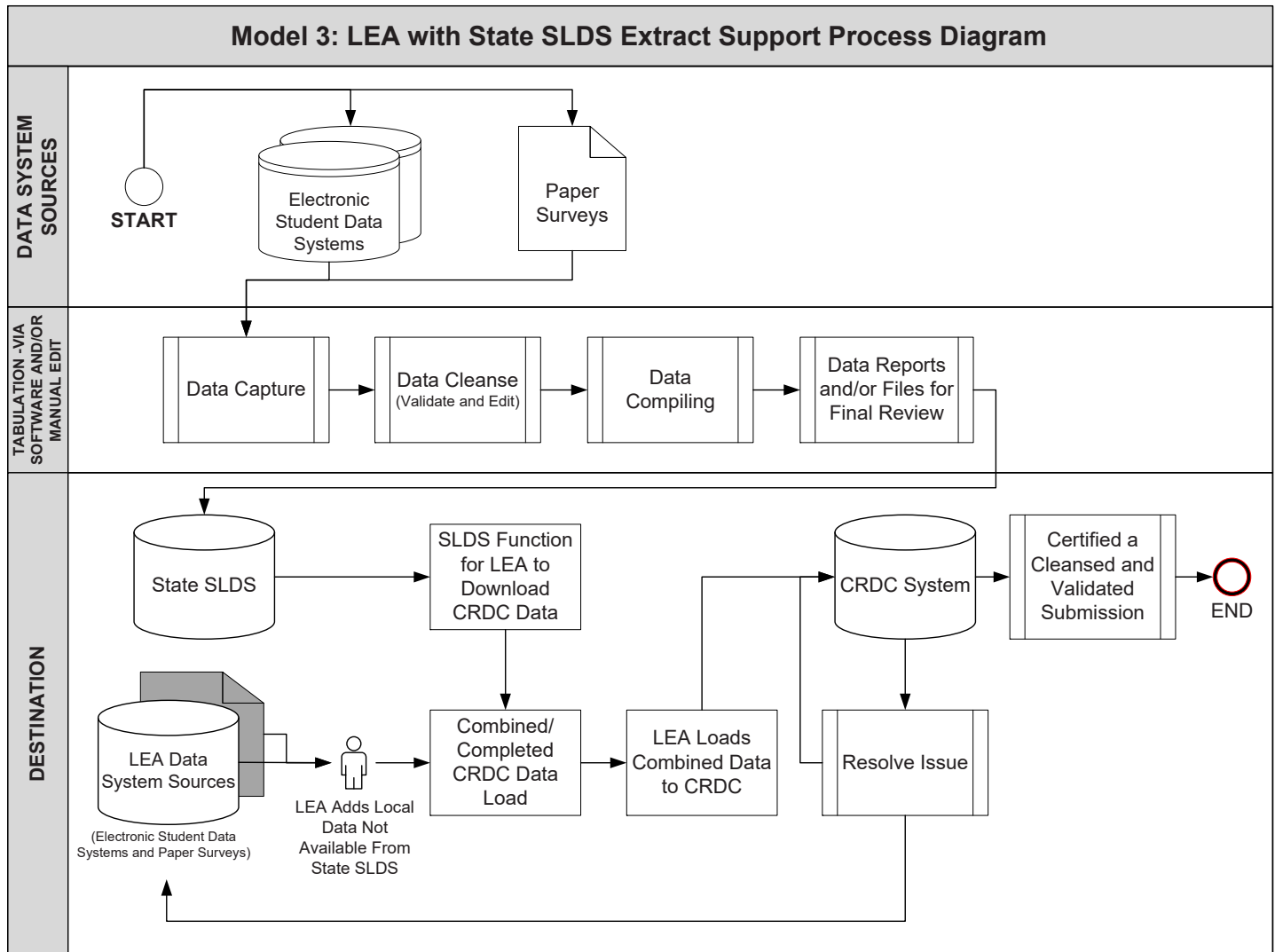
LEA with Vendor Support

The diagram below shows the CRDC reporting process for an LEA that receives vendor support in creating CRDC data files.



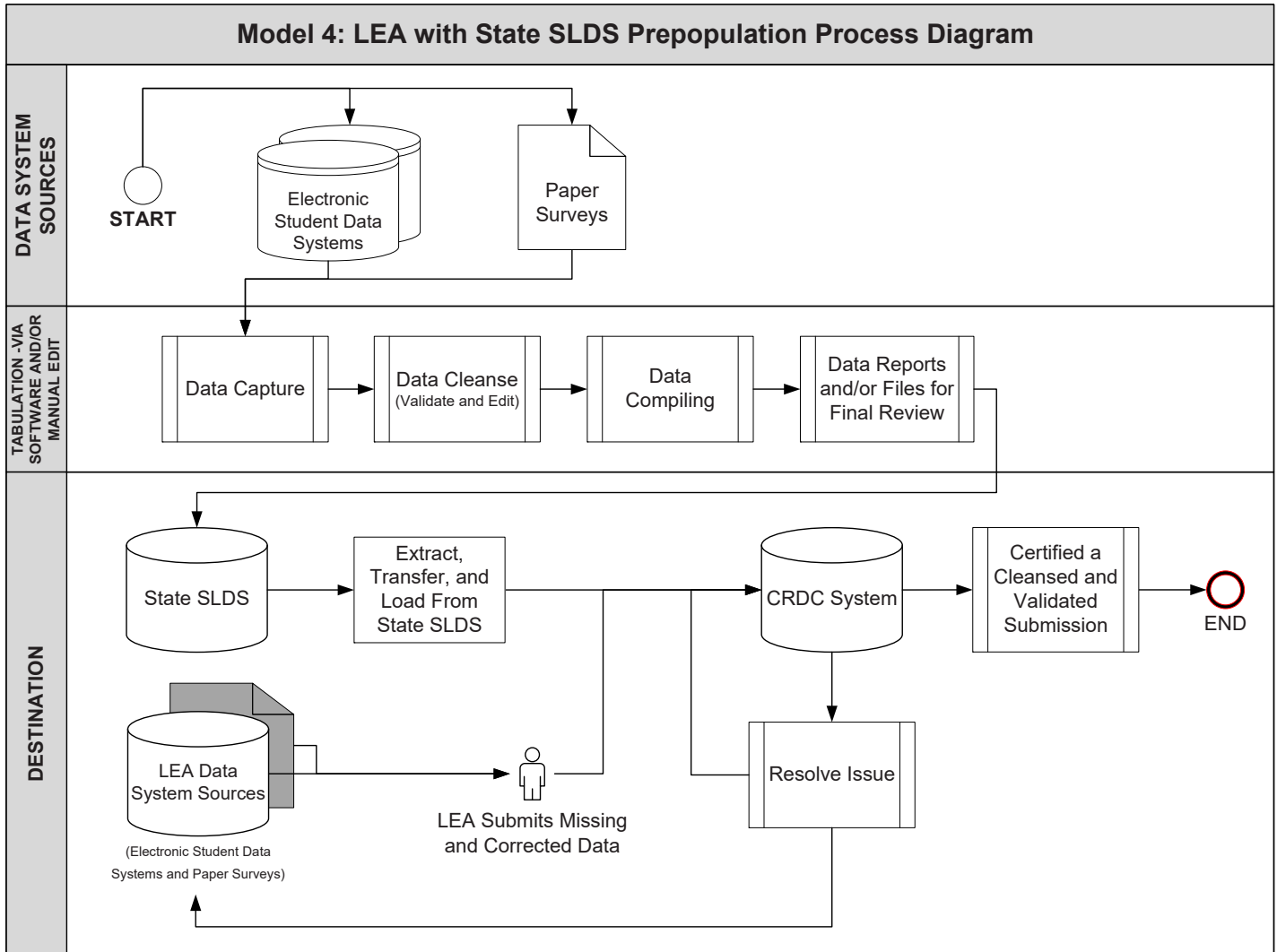
LEA with State Extract Support

The diagram below shows the CRDC reporting process for an LEA that receives CRDC data from the SEA. In this case, the SEA does not prepopulate data in the CRDC Online Submission System. The SEA provides data to the LEA to use for CRDC reporting.



LEA with State Prepopulation Support

The diagram below shows the CRDC reporting process for an LEA whose SEA prepopulates data directly into the CRDC Online Submission System.



Version 0.06