

Communities360: A Portal to SLDS Support & Community

Technical Assistance, Tools, & Collaboration

Statewide Longitudinal Data Systems Grant Program

U.S. DEPARTMENT OF EDUCATION

A Program of the National Center for Education Statistics at IES

The Statewide Longitudinal Data Systems (SLDS) Grant Program and its partners offer a wide and growing range of support to help states and territories in the design, development, use, and sustainability of longitudinal data systems. The SLDS Communities360 website is a free resource that provides easy access to technical assistance (TA) resources, including publications and toolkits, webinars, communities of practice, event materials, informational videos, and more. The site also provides a venue for communication, collaboration, and resource sharing.



SLDS Communities360 Home Page
<https://slds.ed.gov>

The SLDS program’s Communities360 website home page provides easy access to a range of technical assistance products and resources, and it allows you to quickly navigate to more detailed information and additional resources.

Special Resources
<https://slds.ed.gov>
 (see Special Resources section on sidebar)

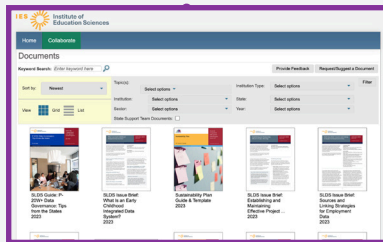
The toolkits bundle resources on common topics of interest such as data governance, research, and sustainability into easy-to-navigate web pages. They are loaded with self assessments, topical guides, templates, and videos.



State Support Team (SST)

<https://slds.ed.gov/#program/about-the-sst>

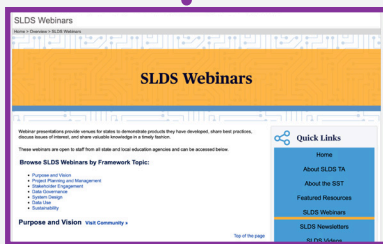
The SST is a group of experienced state data systems experts whose primary objective is to help all states and territories develop, manage, use, and sustain their SLDSs. Every state and territory has an assigned SST point of contact. Visit the SST page to learn about the free TA services the SST can provide your state or territory (including nongrantees). The page includes overview information, a list of states' SST points of contact, SST member bios, and FAQs.



Publications & Document Sharing: Public Domain Clearinghouse (PDC) & Featured Resources

<https://slds.ed.gov/#p=19>
<https://slds.ed.gov/#program/featured-resources>

The PDC houses hundreds of resources shared by states or territories and developed by the SLDS program. The repository is searchable and can be filtered by topic area, contributor, and more. You can also easily browse the **Featured Resources** page for products recently developed by the SLDS program.



Webinars

<https://slds.ed.gov/#program/slds-webinars>

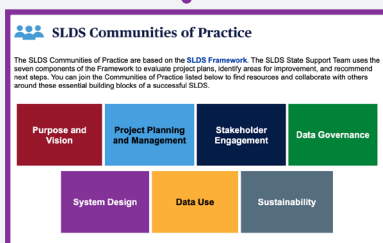
At least once a month, the SLDS program hosts a webinar to highlight the great work happening in states and territories on a variety of timely topics. Each live presentation is recorded and archived with slide decks and other supporting materials. Many webinars also have summary briefs.



Informational Videos

<https://slds.ed.gov/#program/slds-videos>

A set of brief videos provides introductions to various SLDS-related topics. Particularly geared toward audiences in need of 101-level information on topics ranging from early childhood integrated data systems and data governance to what an SLDS is, these videos offer quick overviews to help get you and your stakeholders up to speed.



Communities of Practice (CoPs)

<https://slds.ed.gov> (scroll to CoPs section)

CoPs provide an online platform for states and territories to collaborate on topics of shared interest. Each CoP includes a workspace for sharing documents, members list, featured resources, and more. CoP topics include purpose and vision; project planning and management; stakeholder engagement; data governance; system design; data use; and sustainability.