

Indicator 51. Causes of Death

Number of deaths per 100,000 persons 5 to 24 years old, by age and cause of death: 1960 to 1992¹

Cause of death	1960	1965	1970	1975	1980	1985	1988	1989	1990	1991	1992
5 to 14 years old											
All causes	46.6	42.2	41.3	35.2	30.6	26.3	25.8	25.7	24.0	23.6	22.5
Motor vehicle accidents	7.9	8.9	10.2	8.7	7.9	6.9	7.1	6.5	5.9	5.6	5.2
All other accidents	11.3	9.8	9.9	9.4	7.1	5.7	5.2	5.3	4.5	4.6	4.1
Suicide	0.3	0.3	0.3	0.5	0.4	0.8	0.7	0.7	0.8	0.7	0.9
Males, white	0.5	0.5	0.5	0.8	0.7	1.3	1.1	1.1	1.1	1.2	1.3
Females, white	0.1	0.1	0.1	0.2	0.2	0.5	0.4	0.3	0.4	0.4	0.5
Males, black	(²)	(²)	(²)	0.1	0.3	(²)	(²)	0.9	0.8	1.0	1.0
Females, black	(²)	(²)	0.2	0.1	0.1	(²)	(²)	(²)	(²)	(²)	(²)
Homicide ³	0.5	0.6	0.9	1.0	1.2	1.2	1.3	1.5	1.5	1.4	1.6
Males, white	0.4	0.5	0.5	0.8	0.9	1.1	1.0	1.0	1.1	1.2	1.2
Females, white	0.3	0.4	0.5	0.8	1.0	0.8	0.8	0.9	0.8	0.7	0.8
Males, black	1.4	2.2	4.2	2.7	2.9	3.3	4.3	5.1	5.1	5.4	5.9
Females, black	1.0	1.0	2.0	2.0	2.2	2.0	3.2	3.0	3.6	2.8	3.4
Cancer	6.8	6.5	6.0	4.8	4.3	3.5	3.2	3.3	3.1	3.1	3.0
Heart disease	1.3	0.9	0.8	0.9	0.9	1.0	0.9	0.8	0.9	0.8	0.8
Pneumonia/influenza	2.6	2.1	1.6	1.0	0.6	0.4	0.4	0.4	0.4	0.4	0.3
15 to 24 years old											
All causes	106.3	109.3	127.7	117.3	115.4	95.9	102.1	97.6	99.2	100.1	95.6
Motor vehicle accidents	38.0	44.2	47.2	39.2	44.8	35.7	37.8	34.6	34.1	32.0	28.5
All other accidents	18.1	17.5	21.5	21.1	16.9	12.2	10.7	10.2	9.8	9.9	9.3
Suicide	5.2	6.2	8.8	11.8	12.3	12.8	12.9	13.0	13.2	13.1	13.0
Males, white	8.6	9.6	13.9	19.6	21.4	22.7	23.4	22.5	23.2	23.0	22.7
Females, white	2.3	3.0	4.2	4.9	4.6	4.7	4.6	4.3	4.2	4.2	3.8
Males, black	4.1	8.1	10.5	12.7	12.3	13.3	14.5	16.6	15.1	16.4	18.0
Females, black	(²)	2.7	3.8	3.2	2.3	2.0	2.6	2.9	2.3	1.6	2.2
Homicide ³	5.9	6.8	11.7	13.7	15.6	12.1	15.4	16.5	19.9	22.4	22.2
Males, white	4.4	4.9	7.9	11.2	15.5	11.2	11.5	12.3	15.4	16.9	17.5
Females, white	1.5	1.8	2.7	4.0	4.7	3.6	3.9	3.8	4.0	4.4	4.1
Males, black	46.4	57.1	102.5	89.0	84.3	65.9	101.4	114.2	138.3	158.9	154.4
Females, black	11.9	12.3	17.7	20.3	18.4	14.2	17.5	17.4	18.9	21.6	19.4
Cancer	8.3	8.2	8.3	6.8	6.3	5.4	5.0	5.0	4.9	5.0	5.0
Heart disease	4.0	3.1	3.0	2.6	2.9	2.8	2.9	2.5	2.5	2.7	2.7
Pneumonia/influenza	3.0	2.2	2.4	1.7	0.8	0.6	0.7	0.7	0.6	0.7	0.6

¹ Some data have been revised from previously published figures.

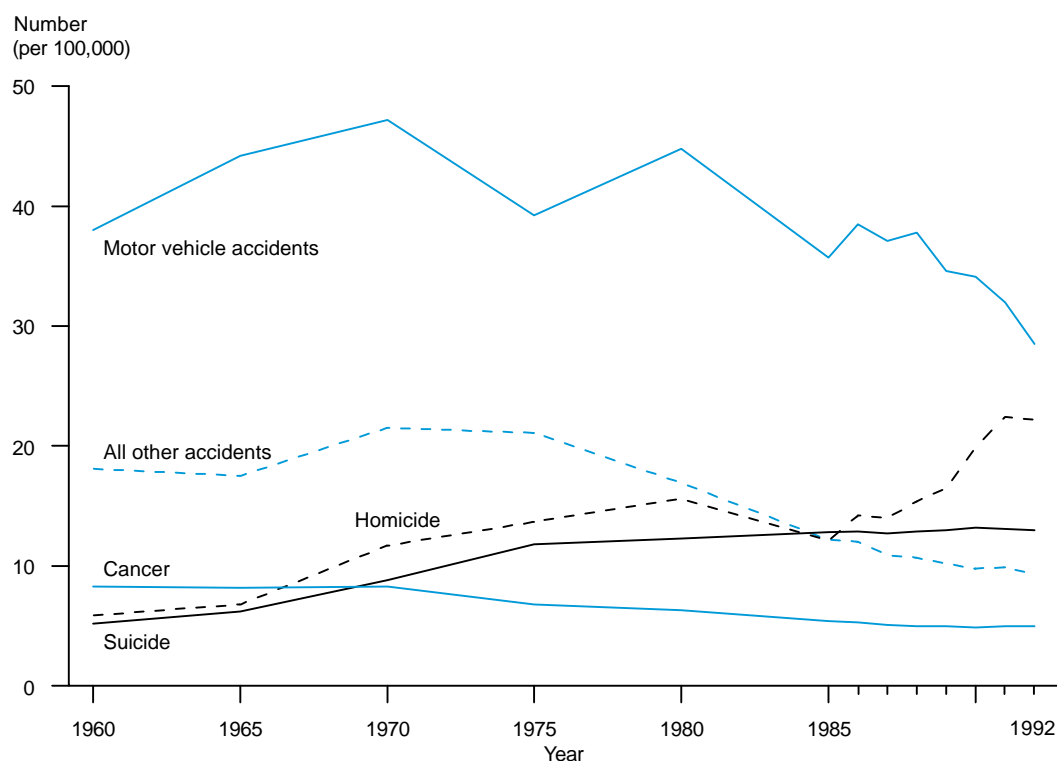
² Less than .05 percent.

³ Includes legal intervention.

SOURCE: U.S. Department of Health and Human Services, *Vital Statistics of the United States, Volume II—Mortality, Part A*, various years and *Monthly Vital Statistics vol. 43, no. 6, Supplement, 1995* (corrected).

Indicator 51. Causes of Death

Number of deaths per 100,000 persons 15 to 24 years old, by cause of death:
1960 to 1992



SOURCE: U.S. Department of Health and Human Services, *Vital Statistics of the United States, Volume II—Mortality, Part A*, various years and *Monthly Vital Statistics vol. 43, no. 6, Supplement, 1995* (corrected).

Deaths of persons 15 to 24 years old have been largely attributable to behavioral causes. Since 1960, motor vehicle accidents have been by far the leading cause of death, followed by other accidents, homicides and suicides. However, during the late 1980s and early 1990s a rapid rise in the homicide rates and continuing drop in the motor vehicle deaths brought the two rates relatively close together. For young black males the homicide rate has increased dramatically in recent years, from 66 per 100,000 in 1985 to 154 per 100,000 in 1992. Meanwhile, the death rates from diseases, such as cancer, heart disease, and pneumonia have shown some declines.